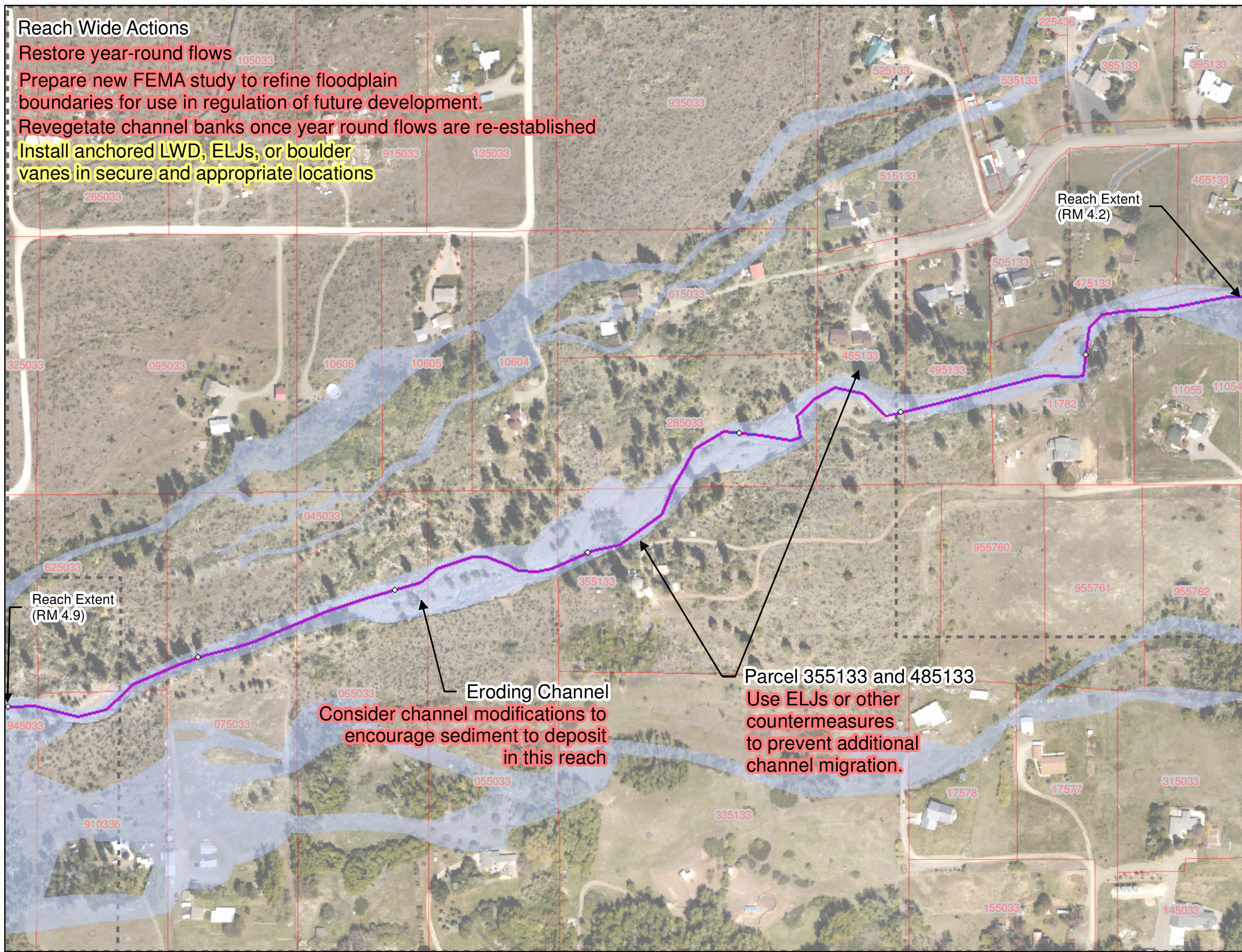


Reach Wide Actions

- Restore year-round flows
- Prepare new FEMA study to refine floodplain boundaries for use in regulation of future development.
- Revegetate channel banks once year round flows are re-established
- Install anchored LWD, ELJs, or boulder vanes in secure and appropriate locations



Reach 8 US Cove Road to DS Reed Diversion (RM 4.2 to RM 4.9)

Legend

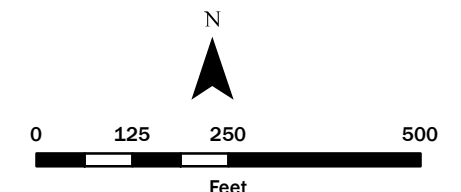
- Manastash Creek
- Bridges
- Approx. Limits of May 2011 Flood
- Berm
- Reach Print Boundary
- Tax Parcels (from County GIS)
- Tenth Mile Marker
- River Mile

Priority

- High
- Medium
- Low

DRAFT

Note: Tax parcel boundaries are from Kittitas County GIS layer. GeoReferencing appears to be poor in many areas, however, they are included for general reference.



Aerial Photography: 2011 NAIP