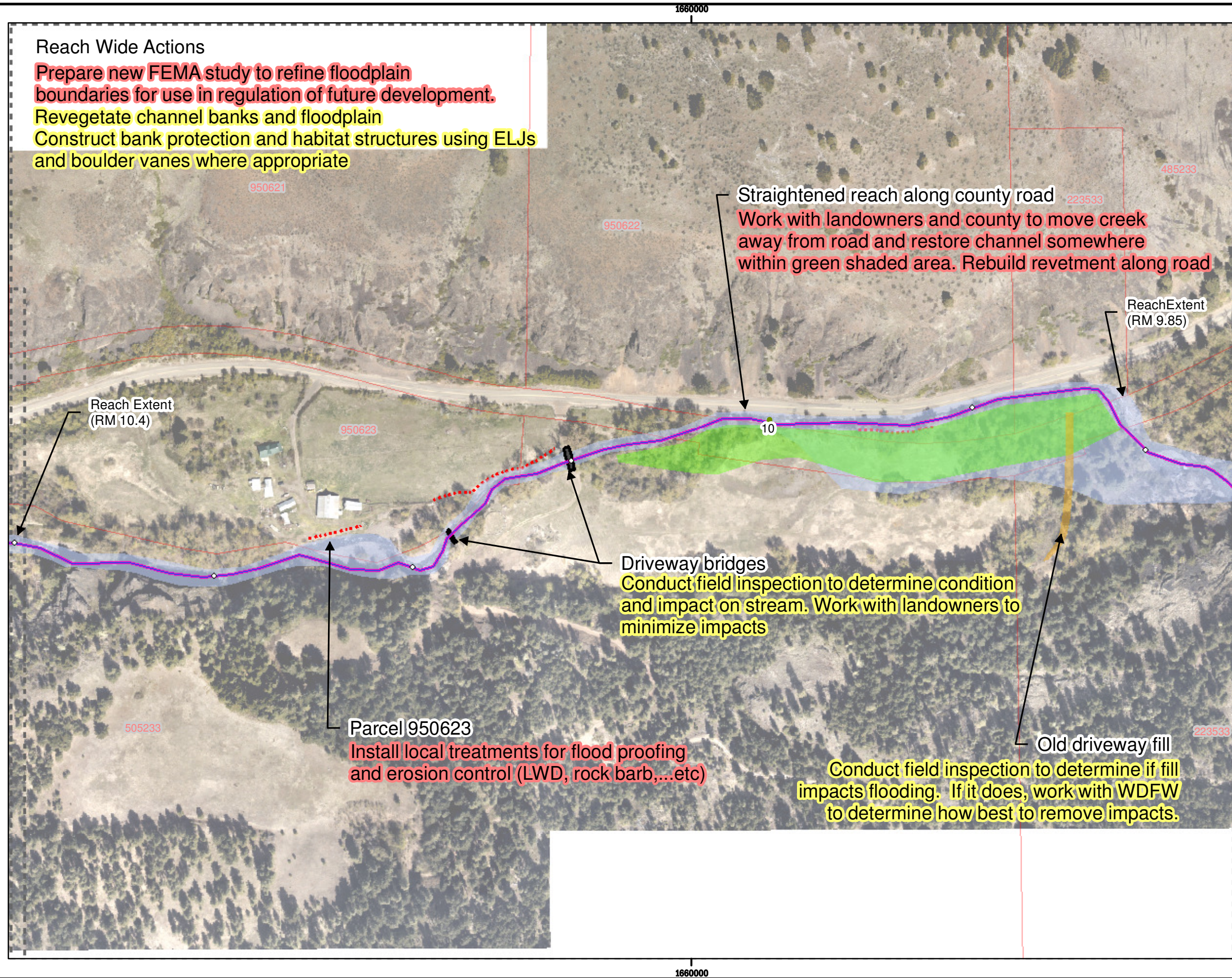


Reach Wide Actions

Prepare new FEMA study to refine floodplain boundaries for use in regulation of future development.

Revegetate channel banks and floodplain

Construct bank protection and habitat structures using ELJs and boulder vanes where appropriate



Straightened reach along county road
 Work with landowners and county to move creek away from road and restore channel somewhere within green shaded area. Rebuild revetment along road

Driveway bridges
 Conduct field inspection to determine condition and impact on stream. Work with landowners to minimize impacts

Parcel 950623
 Install local treatments for flood proofing and erosion control (LWD, rock barb,...etc)

Old driveway fill
 Conduct field inspection to determine if fill impacts flooding. If it does, work with WDFW to determine how best to remove impacts.

Reach 16

County Road
 (RM 9.85 to RM 10.4)

Legend

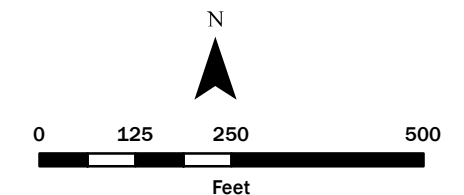
- Manastash Creek
- Bridges
- Abandoned Road Crossing Fill
- Widened Creek Corridor
- Approx. Limits of May 2011 Flood
- Berm
- Reach Print Boundary
- Tax Parcels (from County GIS)
- Tenth Mile Marker
- River Mile

Priority

- High**
- Medium**
- Low**

DRAFT

Note: Tax parcel boundaries are from Kittitas County GIS layer. GeoReferencing appears to be poor in many areas, however, they are included for general reference.



Aerial Photography: 2011 NAIP