

# VOLUNTARY STEWARDSHIP PROGRAM

---

KITTITAS COUNTY WATERSHED GROUP MEETING

ARMORY HALL, KITTITAS VALLEY EVENT CENTER

MARCH 14, 2017 1:00PM – 4:00PM

# WELCOME

---

- Introductions
- Review Agenda

# WATERSHED GROUP

---

- **Ag Interests**

- Kittitas County Farm Bureau (Mark Charlton/Brad Haberman)
- Kittitas County Cattlemen (Terry Clarke)
- Kittitas County Hay Growers (Brian Cortese)
- Kittitas Reclamation District (Kevin Eslinger/ Urban Eberhart)
- Jack Clerf (Cascade Irrigation District)
- Swauk-Teaway Grange (Dale Rusho)
- Northern Kittitas Co Operator (Jim Miller)
- Lower Kittitas Co Operator (Karen Poulsen)
- Small Acreage Operator (Matthew Cox)
- Small Acreage Operator - Organic (Bambi Miller)
- Dryland Operator (Lila Hanson)

- **Environmental Interests**

- Forterra (Jill Scheffer)
- Trout Unlimited - Washington Water Project (Justin Bezold)
- Washington Water Trust (Arden Thomas)
- Kittitas Conservation Trust (Mitch Long)
- *Kittitas County Conservation Coalition*

- **Tribes**

- Yakama Nation (Phil Rigdon/John Marvin)

# TECHNICAL ADVISORY COMMITTEE

---

- KCCD (Mark Crowley, Sherry Swanson and Rose Shriner)
- County CDS (Doc Hansen)
- County Flood Control Zone District (Karen Hodges)
- Kittitas County Water Purveyors (Kat Satnik)
- Washington Department of Fish & Wildlife (Jen Nelson)
- Washington Department of Ag (Kelly McClain)
- Washington Department of Natural Resources (Larry Leach)
- Washington Department of Ecology
- WSU Extension (Tip Hudson)
- USDA Natural Resources Conservation Service (Erin Kaczmarczyk/Brent Dixon)

# MINUTES REVIEW

---

**February 22, 2017**

# OUTREACH UPDATE

---

**Website ([http://www.kccd.net/VSP\\_WatershedGroup.htm](http://www.kccd.net/VSP_WatershedGroup.htm))**



# UPDATE ON STATUS OF WATERSHED PLANS AND PLANNING EFFORTS

---

- Conservation Commission Website
  - <http://scc.wa.gov/vsp/>
- Thurston -  
<https://www.dropbox.com/sh/hapx7wfkdl6ptj/AAALmikN93nY8vKvex9Zdik-a?dl=0>

## Voluntary Stewardship Program

---

Work Plan Draft

March 8, 2017



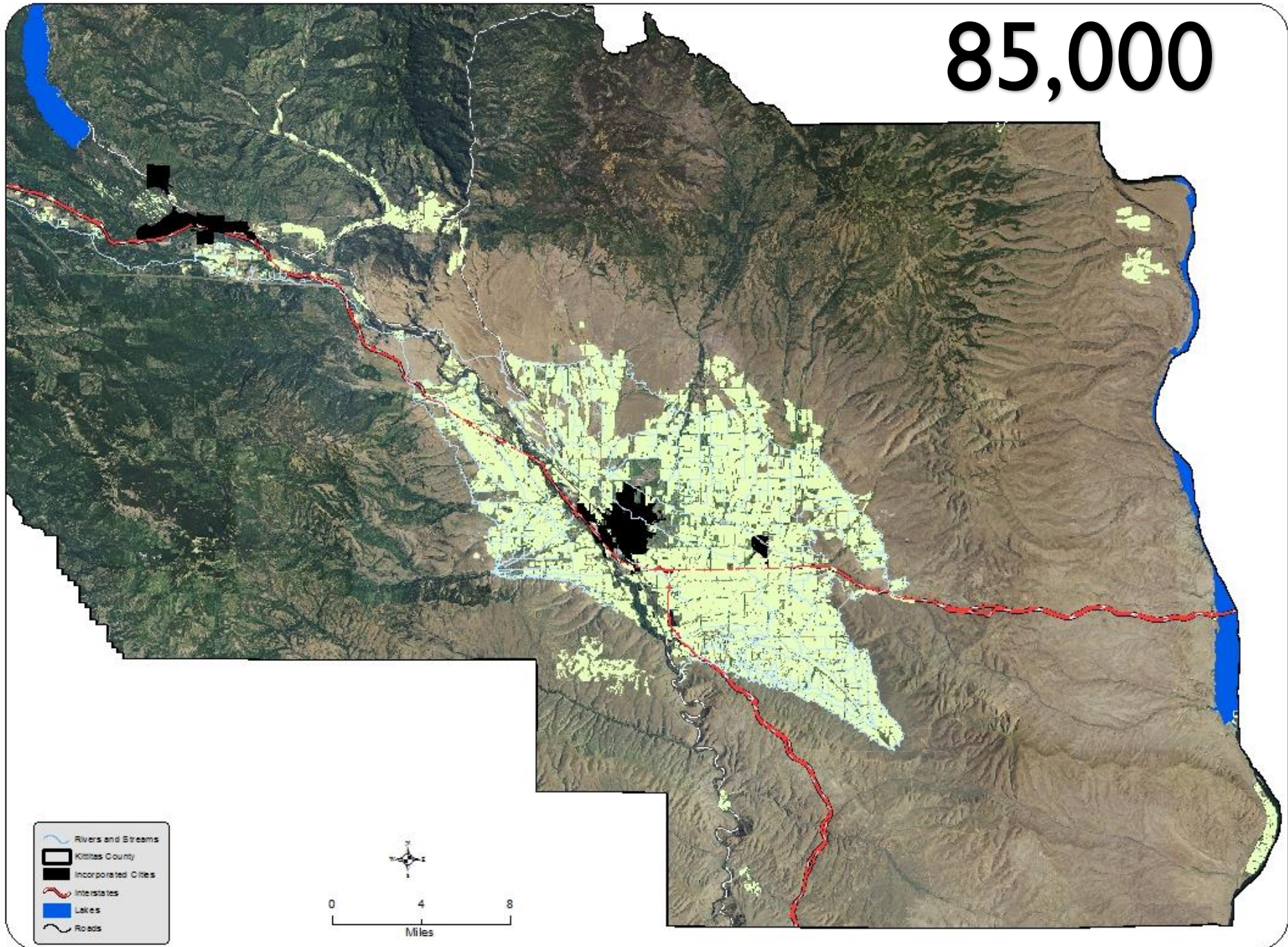
# RAPID WATERSHED ASSESSMENT

---

- Defining Geographic Area for Assessments
  - Need to select resource concerns (only four at a time)
  - Need to select practices (only 30 at a time)

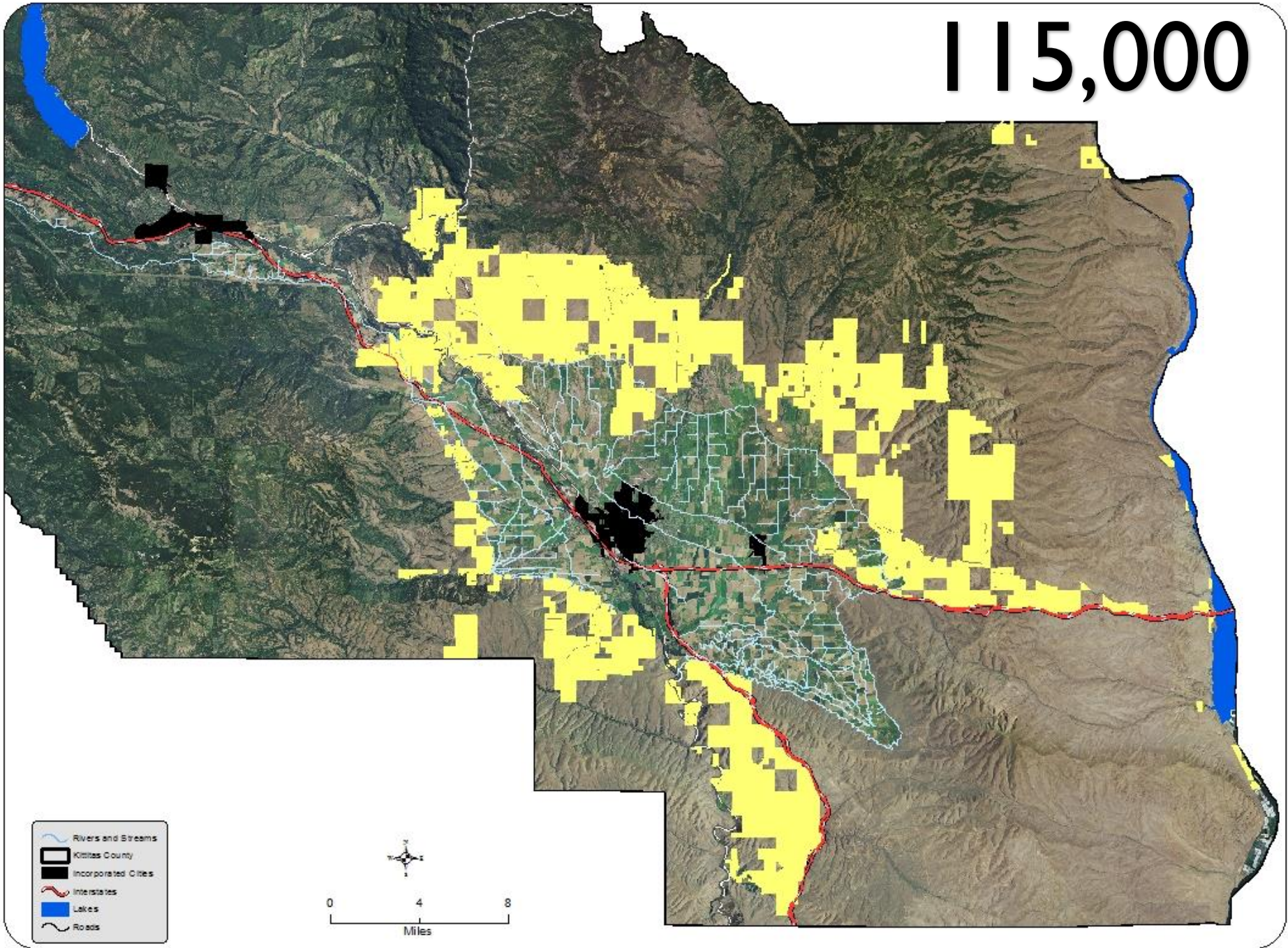


# 85,000

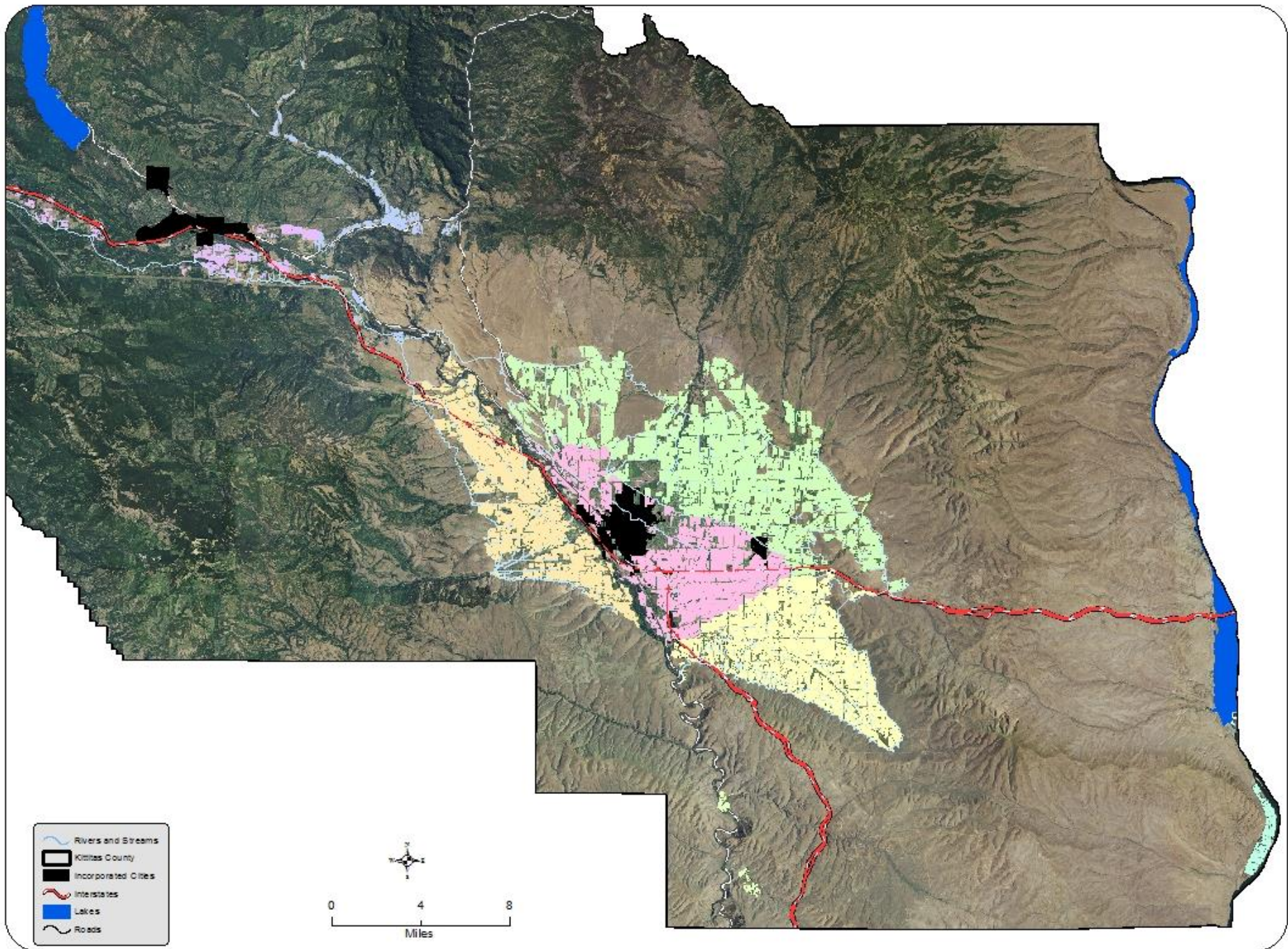




# 115,000





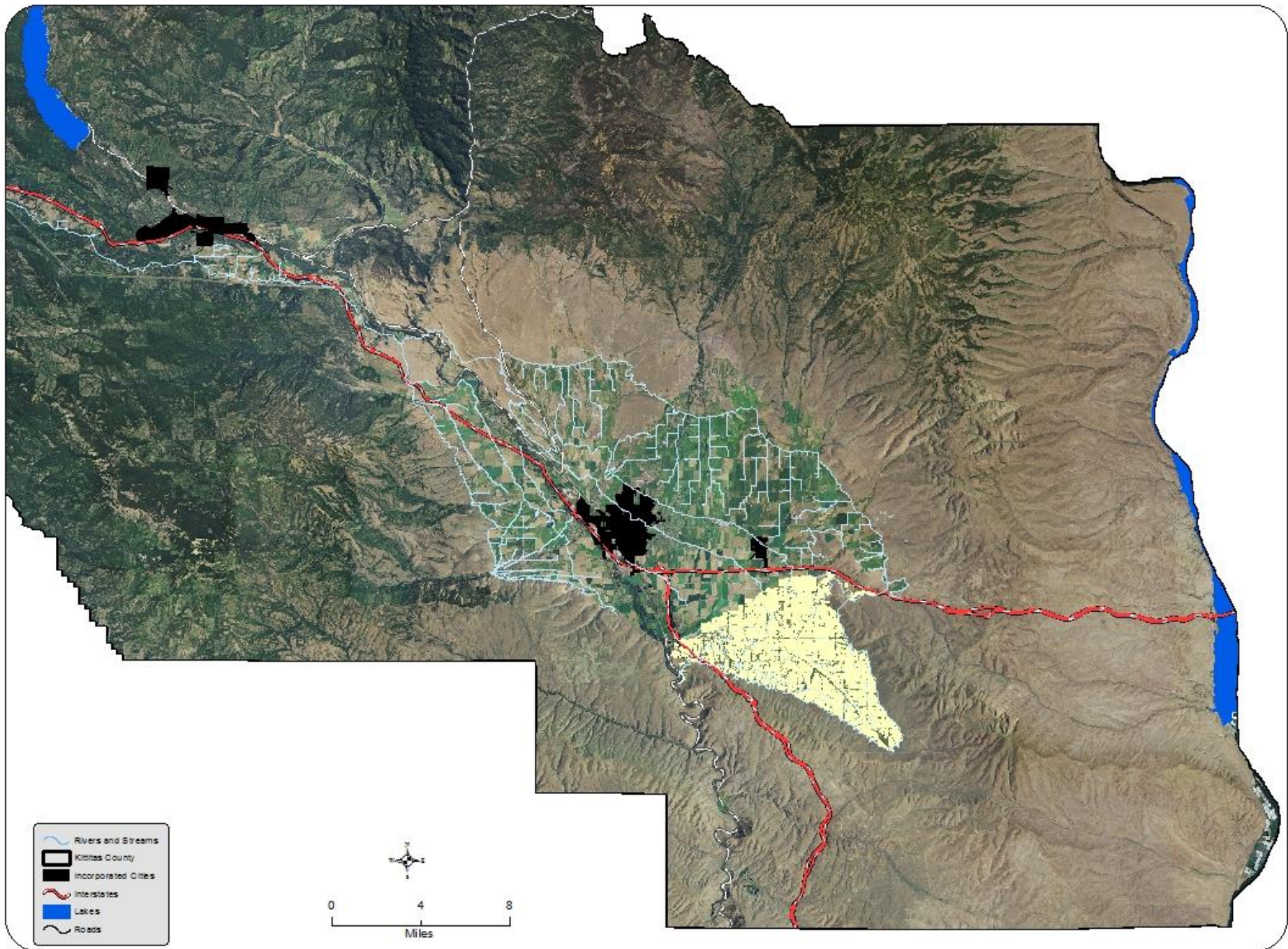


# RAPID WATERSHED ASSESSMENT

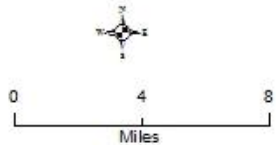
---

Area	Acres	Sprinklers	Crop Notes
Badger Pocket	17,404	5,528 (32%)	928 acres Orchard
Below Cascade	15,346	3,777 (25%)	Hay, grains
Above Cascade	32,883	4,387 (13%)	Hay, grains, pasture
Taneum/Manastash	14,777	6,740 (47%)	Hay, grains, pasture
Swauk/Teaway	1,452	919 (63%)	Hay, pasture
Big Creek to Peoh Pt	1,968	898 (45%)	Hay, pasture
Yakima Canyon	418	418 (100%)	Hay, Orchard
Columbia River	1,100	1,100 (100%)	Orchard





- Rivers and Streams
- Kittitas County
- Incorporated Cities
- Interstates
- Lakes
- Roads



# RAPID WATERSHED ASSESSMENT

---

- Need to Project Change
  - Baseline (NOT VSP – just for RWA)
  - Progressive
  - RMS (Resource Management System)



# RAPID WATERSHED ASSESSMENT

---

- **Baseline**
  - Rill irrigated (buried pipelines, water control structures, gated pipe, concrete lined ditch, etc.)
  - No management practices
  - No restoration practices

# RAPID WATERSHED ASSESSMENT

---

- Progressive
  - Sprinkler irrigated (wheel line, pivot, linear)
  - Polyacrylamide
  - Structure for water control (including fish screen)
  - “Clearing & Snagging” (removal of decommissioned diversion)
  - Fencing
  - Spring development/Watering facilities
  - Tree/Shrub Planting
  - Trust Water Rights

# RAPID WATERSHED ASSESSMENT

---

- RMS (Resource Management Systems)
  - Aquatic Organism Passage
  - Irrigation Water Management
  - Nutrient Management
  - Prescribed Grazing
  - Riparian Forest Buffer
  - Riparian Herbaceous Cover
  - Stream Habitat Improvement and Management
  - Streambank & Shoreline Protection
  - Wetland Enhancement
  - Wetland Restoration
  - Wetland Wildlife Habitat Management
  - Wildlife Watering Facility

# RAPID WATERSHED ASSESSMENT

---

- Defining Geographic Area for Assessments
  - Need to select resource concerns (only four at a time)
    - Critical Areas?
    - Indicator conditions for Critical Areas?
  - Need to select practices (only 30 at a time)
    - Primary Practices?

# NON NRCS FUNDED ENHANCEMENTS

KCCD Projects Conservation Practices Applied 2011-2016				
NRCS Practice Code	NRCS Conservation Practice	Count	Quantity	Type
?	?Instream Flow?	2	5.41	CFS
430	Irrigation Water Pipeline	10	37929	Ft
430	Irrigation Water Pipeline	9	4390	Ft
442	Sprinkler System	51	1831	Ac
533	Pumping Plant	2	2	No
587	Structure for Water Control	2	2	No
326	Clearing and Snagging	1	20	Cubic Yard
396	Aquatic Organism Passage	1	2770	Cubic Yard
396	Aquatic Organism Passage	2	1200	Sq Ft
580	Streambank/Shoreline Protection	2	445	Ft
612	Tree and Shrub Establishment	2	0.24	Ac
550	Range Planting	1	494	Ac

# PARTICIPANTS FORUM

---

- Assessment of unfinished/incomplete discussions or issues/concerns
- Group discussion of meeting times, length and frequency
- Members comfortable with progress and decisions made



# MARCH 2017

SUN	MON	TUE	WED	THU	FRI	SAT
			1	2	3	4
5	6	7	8	9	10	11
12	13	14	15	16	17	18
19	20	21	22	23	24	25
26	27	28	29	30	31	

# ACTION REGISTER

---

- Group discussion of needed follow-up
- Next meeting scheduled