

# Kittitas County Voluntary Stewardship Program



Watershed Group Meeting

March 22, 2019 10AM to Noon

Armory, Kittitas Valley Event Center

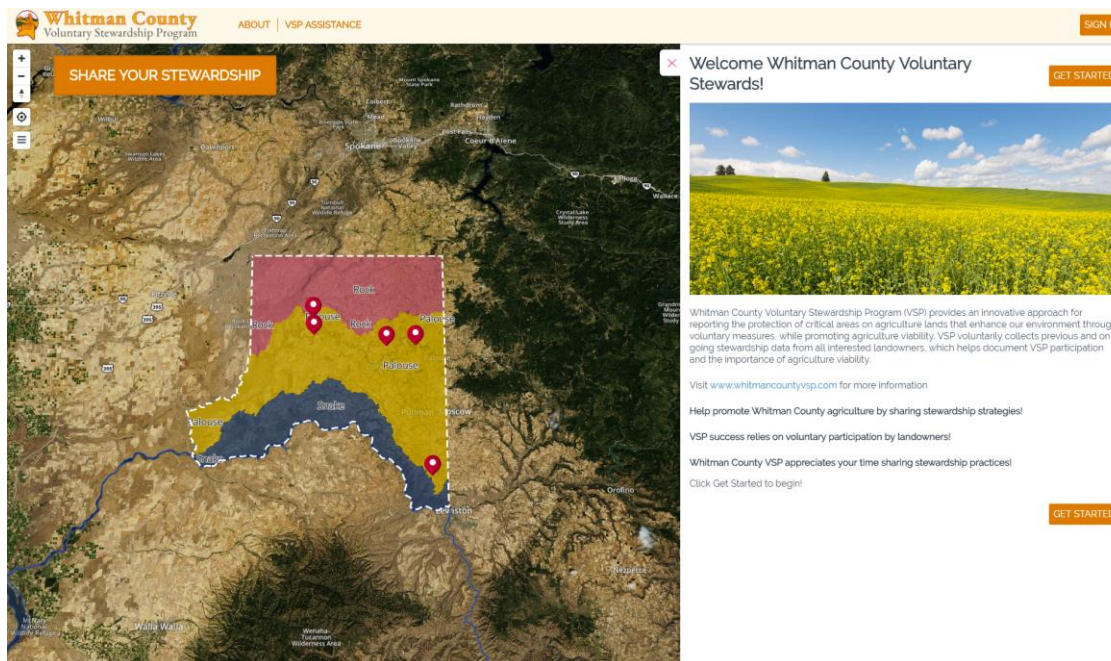
# Review Minutes

- Minutes - February 22, 2019
- Funding Remaining in Biennium
  - \$46,184.66
    - Equipment Purchase
    - Map Application
    - Staff Time



# Outreach Activities and Materials

- Solicitation for “Natural Resource On-Line Map and Inventory Project”



# Technical Assistance

- VSP Inventories
  - Maps of critical areas
  - Map of soils
  - List of BMPs
  - Program Descriptions



# Voluntary Stewardship Program Critical Area Inventory

## Legend

- Wa State Park
- ~ Summer Steelhead Critical Habitat
- ~ Bull Trout Critical Habitat 2010
- ~ PHS Fish Distribution (SWIFD)
- ~ Shorelines of State
- ~ Fish Bearing
- ~ Non-Fish Bearing
- ~ Unknown
- ~ Irrigation
- Wellhead (DOH)

## Frequently Flooded

- 100 Year Floodplain
- Floodway
- WDFW's Priority Habitat Species
- Wetlands

## Hazard Slope

- 25 - 50% Slope
- Greater than 50% Slope
- ~ Roads



# Voluntary Stewardship Program Critical Area Inventory

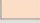

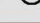
## Legend

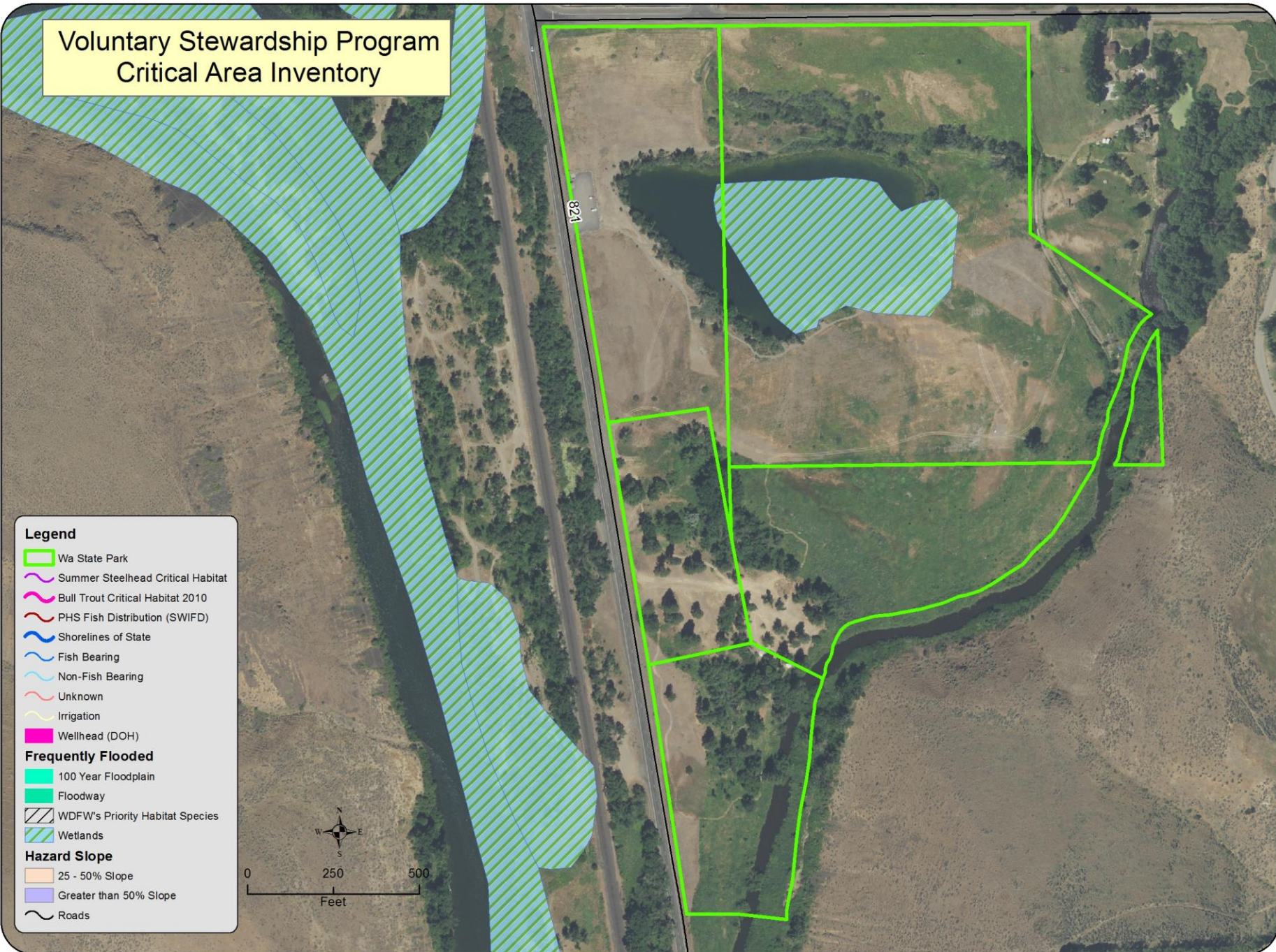
-  Wa State Park
-  Summer Steelhead Critical Habitat
-  Bull Trout Critical Habitat 2010
-  PHS Fish Distribution (SWIFD)
-  Shorelines of State
-  Fish Bearing
-  Non-Fish Bearing
-  Unknown
-  Irrigation
-  Wellhead (DOH)

## Frequently Flooded

-  100 Year Floodplain
-  Floodway
-  WDFW's Priority Habitat Species
-  Wetlands

## Hazard Slope

-  25 - 50% Slope
-  Greater than 50% Slope
-  Roads



# Voluntary Stewardship Program Critical Area Inventory

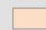


## Legend

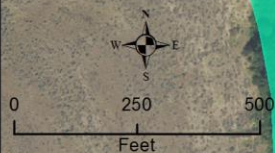
-  Wa State Park
-  Summer Steelhead Critical Habitat
-  Bull Trout Critical Habitat 2010
-  PHS Fish Distribution (SWIFD)
-  Shorelines of State
-  Fish Bearing
-  Non-Fish Bearing
-  Unknown
-  Irrigation
-  Wellhead (DOH)

## Frequently Flooded

-  100 Year Floodplain
-  Floodway
-  WDFW's Priority Habitat Species
-  Wetlands

## Hazard Slope

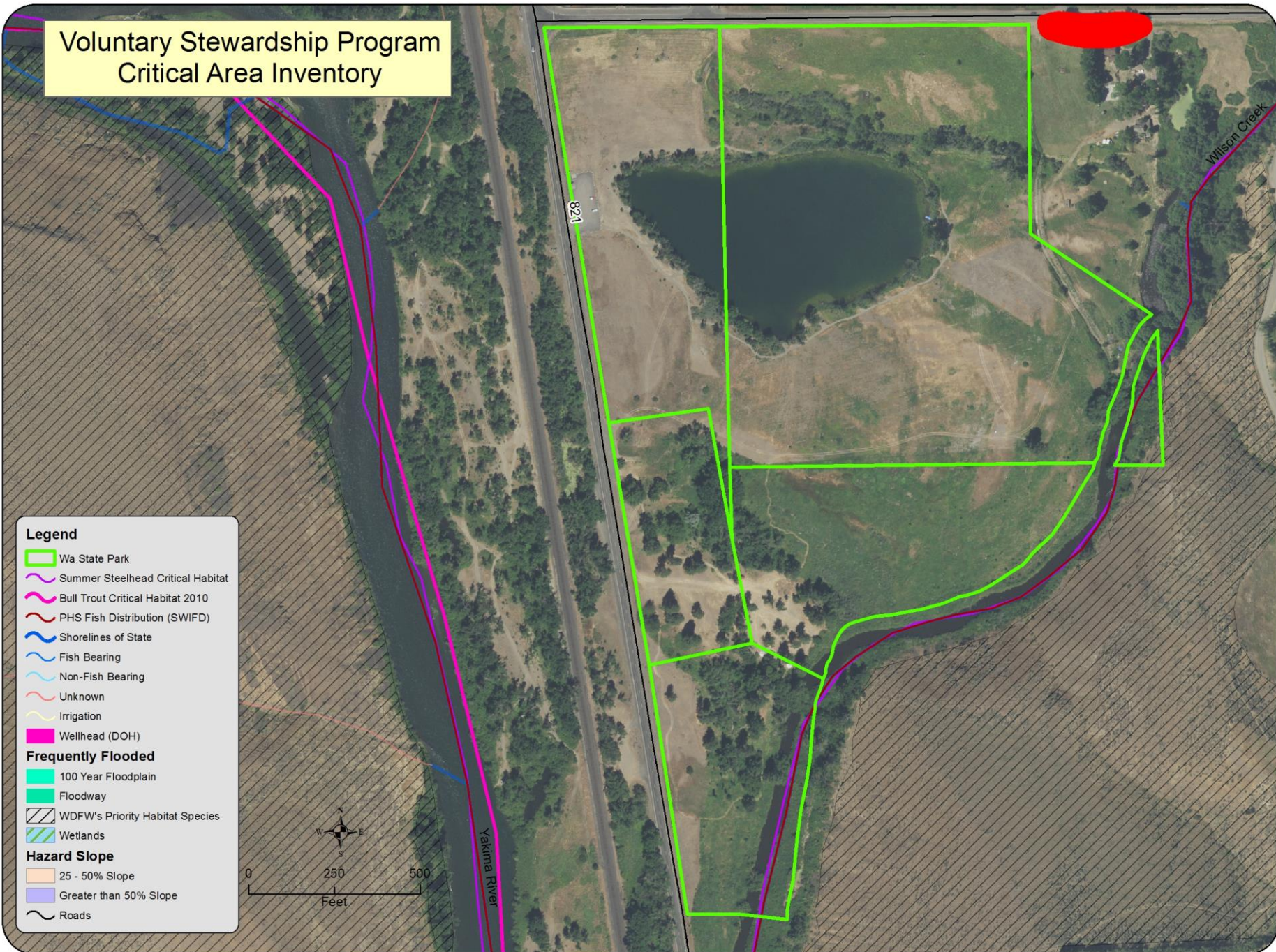
-  25 - 50% Slope
-  Greater than 50% Slope
-  Roads



# Voluntary Stewardship Program Critical Area Inventory

## Legend

- Wa State Park
- Summer Steelhead Critical Habitat
- Bull Trout Critical Habitat 2010
- PHS Fish Distribution (SWIFD)
- Shorelines of State
- Fish Bearing
- Non-Fish Bearing
- Unknown
- Irrigation
- Wellhead (DOH)
- Frequently Flooded**
- 100 Year Floodplain
- Floodway
- WDFW's Priority Habitat Species
- Wetlands
- Hazard Slope**
- 25 - 50% Slope
- Greater than 50% Slope
- Roads



# Voluntary Stewardship Program Critical Area Inventory

## Legend

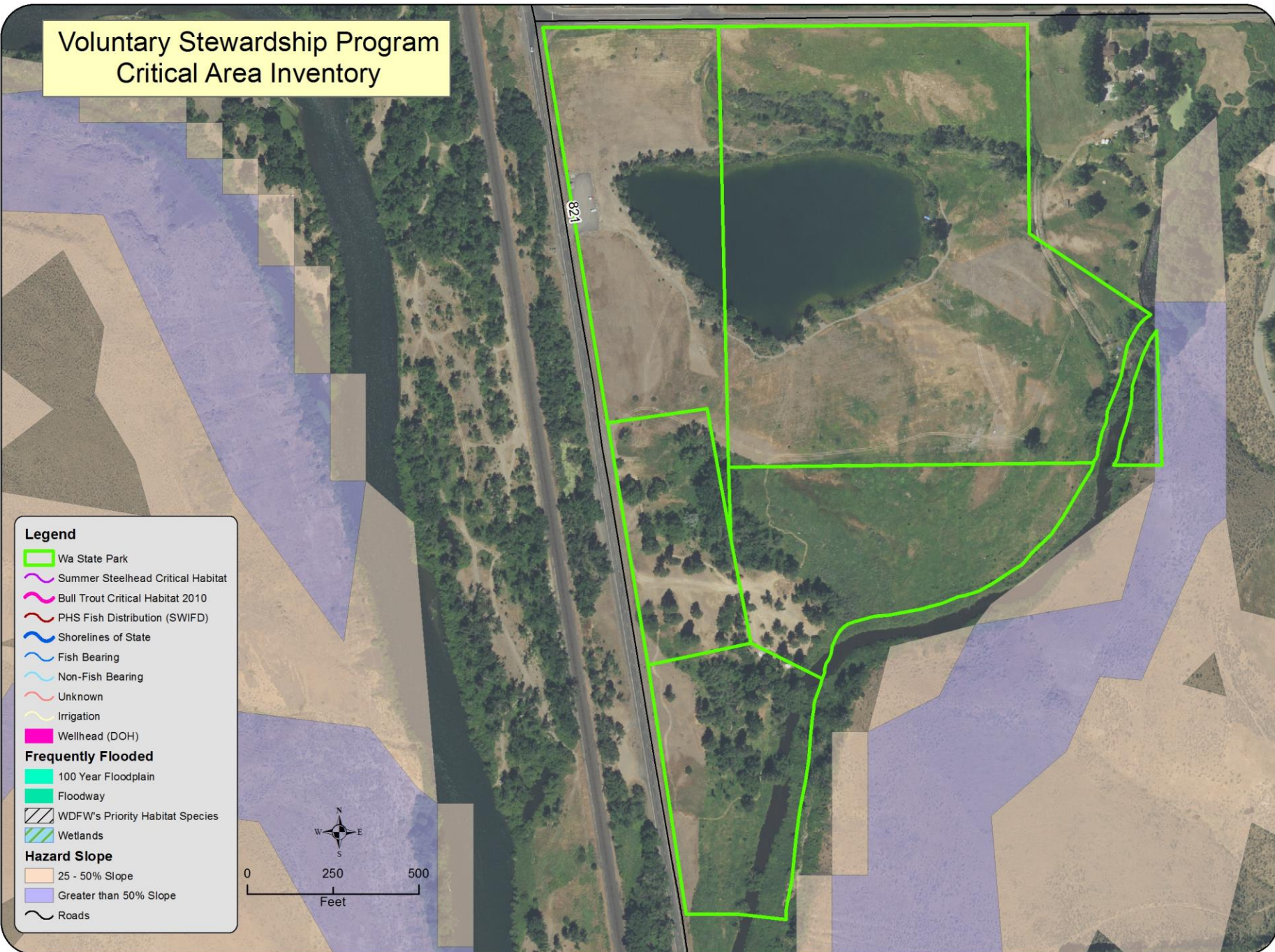
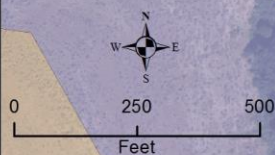
- Wa State Park
- ~ Summer Steelhead Critical Habitat
- ~ Bull Trout Critical Habitat 2010
- ~ PHS Fish Distribution (SWIFD)
- ~ Shorelines of State
- ~ Fish Bearing
- ~ Non-Fish Bearing
- ~ Unknown
- ~ Irrigation
- Wellhead (DOH)

## Frequently Flooded

- 100 Year Floodplain
- Floodway
- WDFW's Priority Habitat Species
- Wetlands

## Hazard Slope

- 25 - 50% Slope
- Greater than 50% Slope
- ~ Roads



# Reporting Requirements

- 2-Year report due August 30, 2019
  - Format provided
  - Data collection underway
- VSP Watershed Group will review draft at July 26 meeting



# KCCD Staff Plan

- VSP Project Manager



# Additional Topics

- Updated National Wetland Inventory



# Voluntary Stewardship Program Critical Area Inventory

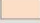

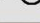
## Legend

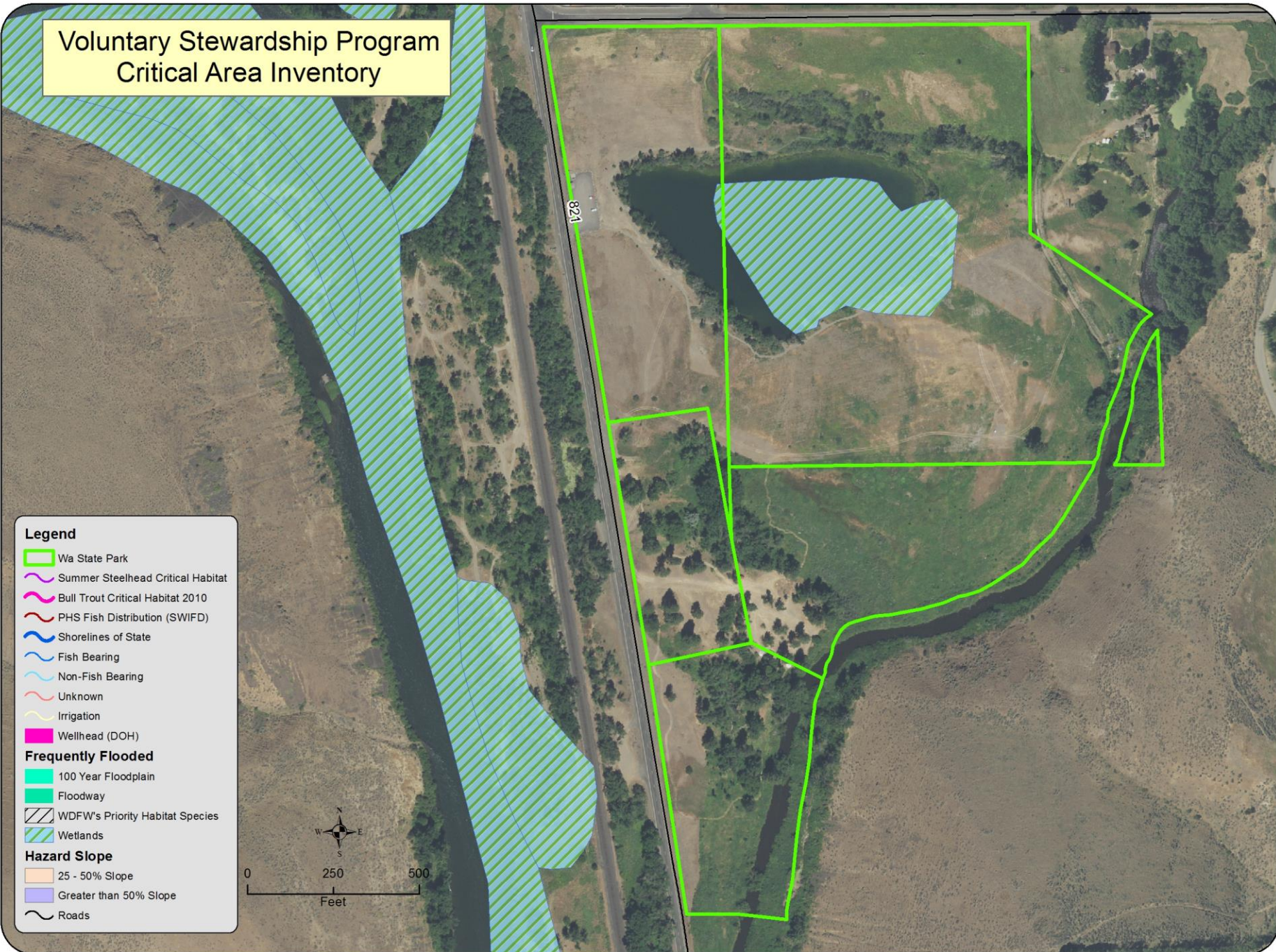
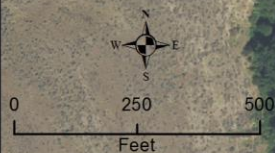
-  Wa State Park
-  Summer Steelhead Critical Habitat
-  Bull Trout Critical Habitat 2010
-  PHS Fish Distribution (SWIFD)
-  Shorelines of State
-  Fish Bearing
-  Non-Fish Bearing
-  Unknown
-  Irrigation
-  Wellhead (DOH)

## Frequently Flooded

-  100 Year Floodplain
-  Floodway
-  WDFW's Priority Habitat Species
-  Wetlands

## Hazard Slope

-  25 - 50% Slope
-  Greater than 50% Slope
-  Roads



# Voluntary Stewardship Program Critical Area Inventory

## Legend

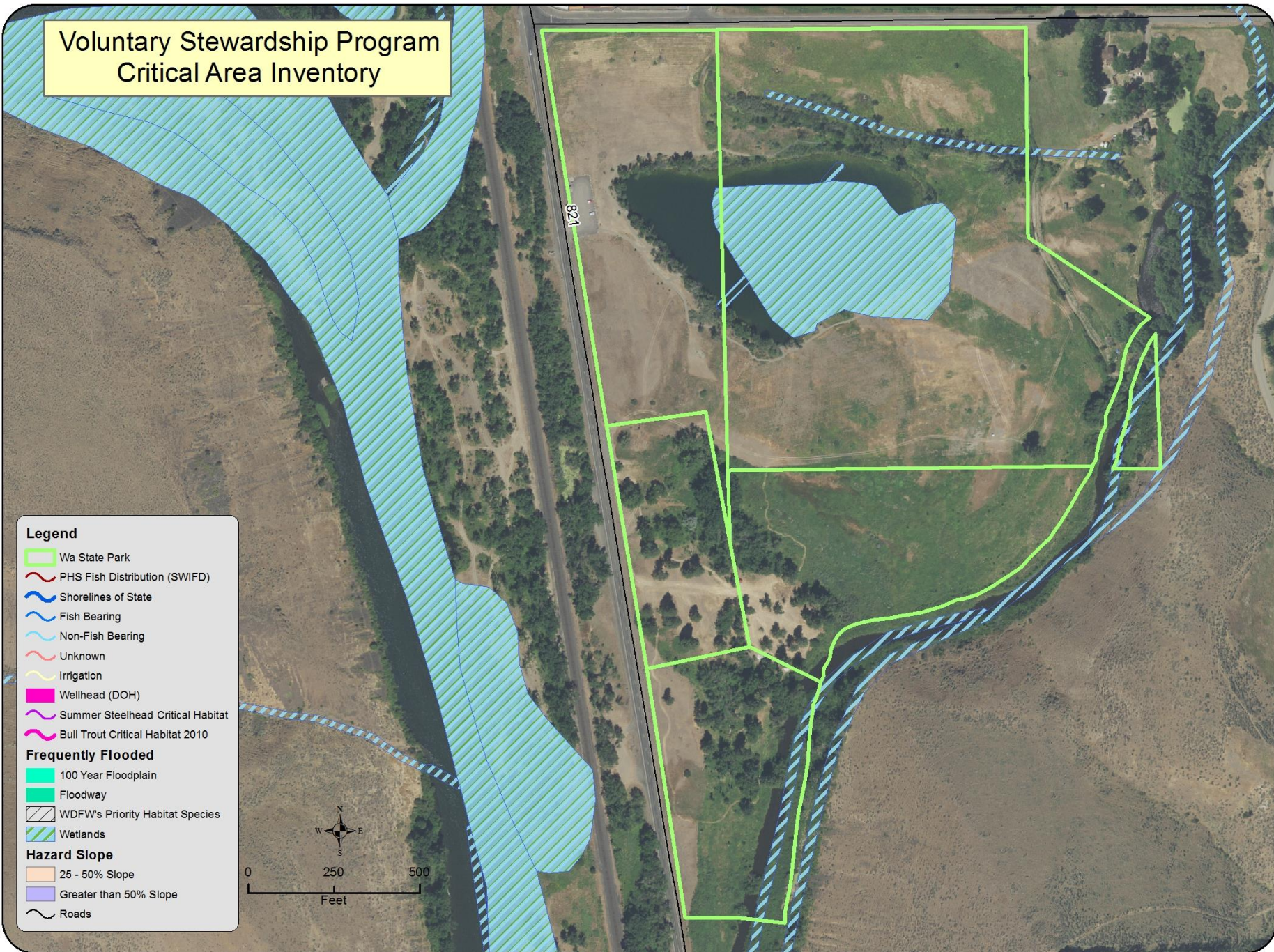
- Wa State Park
- ~ PHS Fish Distribution (SWIFD)
- ~ Shorelines of State
- ~ Fish Bearing
- ~ Non-Fish Bearing
- ~ Unknown
- ~ Irrigation
- Wellhead (DOH)
- ~ Summer Steelhead Critical Habitat
- ~ Bull Trout Critical Habitat 2010

## Frequently Flooded

- 100 Year Floodplain
- Floodway
- WDFW's Priority Habitat Species
- Wetlands

## Hazard Slope

- 25 - 50% Slope
- Greater than 50% Slope
- ~ Roads



# Voluntary Stewardship Program Critical Area Inventory




## Legend

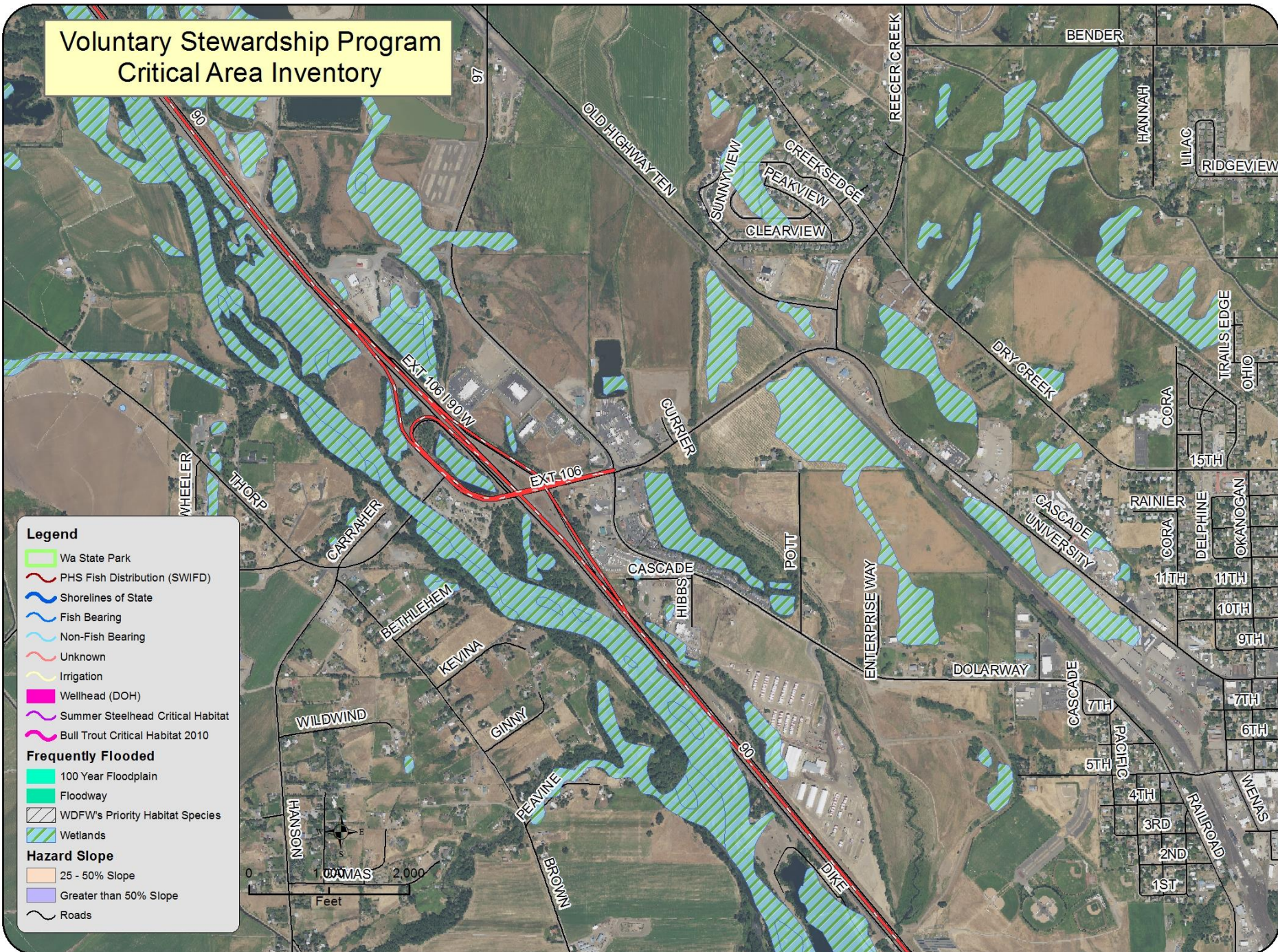
-  Wa State Park
-  PHS Fish Distribution (SWIFD)
-  Shorelines of State
-  Fish Bearing
-  Non-Fish Bearing
-  Unknown
-  Irrigation
-  Wellhead (DOH)
-  Summer Steelhead Critical Habitat
-  Bull Trout Critical Habitat 2010

## Frequently Flooded

-  100 Year Floodplain
-  Floodway
-  WDFW's Priority Habitat Species
-  Wetlands

## Hazard Slope

-  25 - 50% Slope
-  Greater than 50% Slope
-  Roads



# Voluntary Stewardship Program Critical Area Inventory


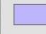

## Legend

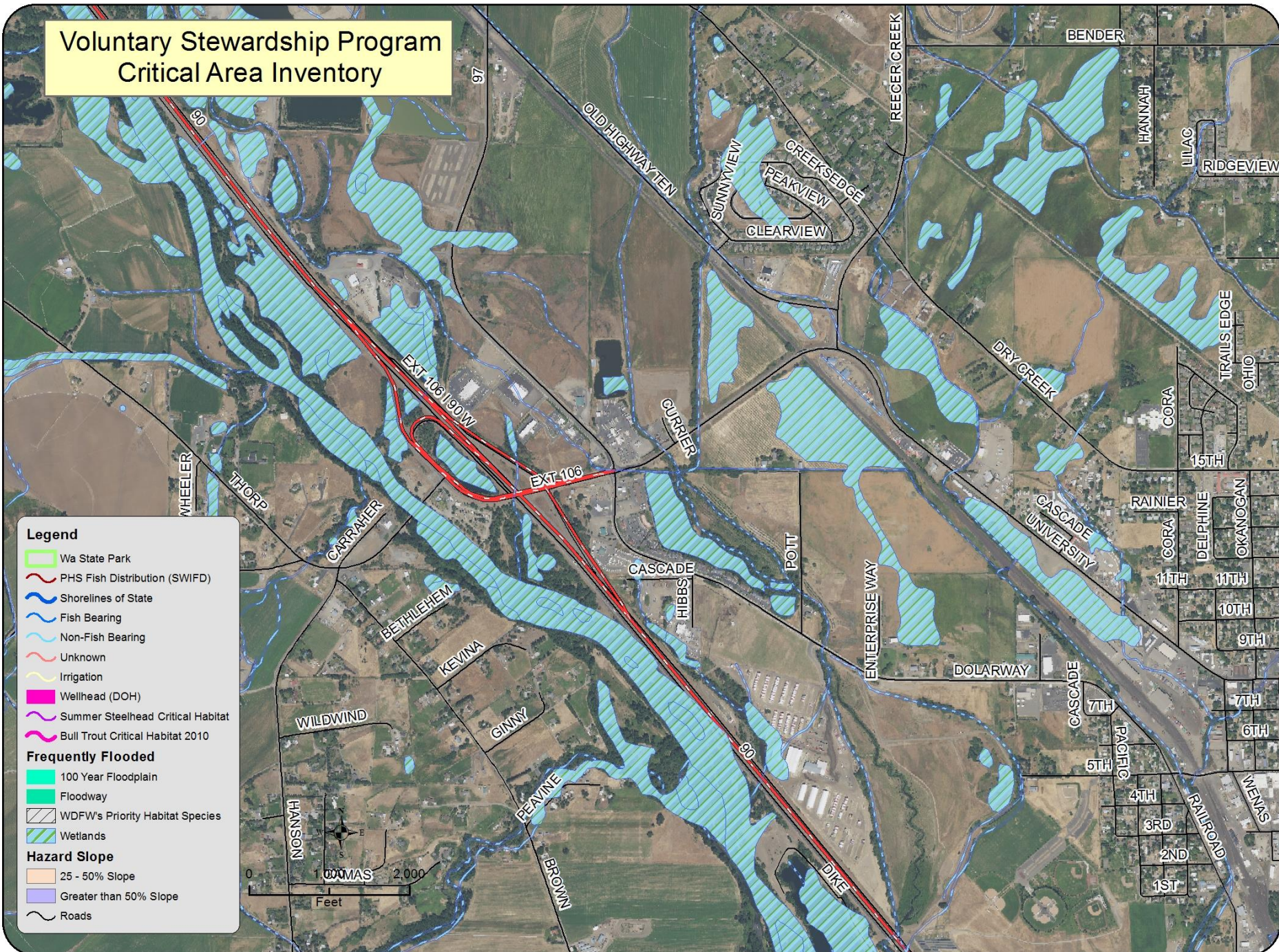
-  Wa State Park
-  PHS Fish Distribution (SWIFD)
-  Shorelines of State
-  Fish Bearing
-  Non-Fish Bearing
-  Unknown
-  Irrigation
-  Wellhead (DOH)
-  Summer Steelhead Critical Habitat
-  Bull Trout Critical Habitat 2010

## Frequently Flooded

-  100 Year Floodplain
-  Floodway
-  WDFW's Priority Habitat Species
-  Wetlands

## Hazard Slope

-  25 - 50% Slope
-  Greater than 50% Slope
-  Roads



# Additional Topics

## ■ Winter Storm Damage

- WSCC looking into potential resources could be made available to supplement USDA's Emergency Livestock Assistance Program.
- Best estimate of the number of livestock producers possibly needing assistance and the type of assistance needed (i.e. feed, fuel, vet services, etc.).



## ■ Mountains to Sound Greenway

- 



# Participants Forum



# Action Register

- Input on VSP Inventory/Assessments
- On-Line Map Beta Version
- Watershed Group Meeting - July 26, 2019

