



# 5-Year Plan (2022 to 2026) Kittitas County Conservation District

For More Information Contact: Anna Lael, 509-925-3352, [a-lael@conservewa.net](mailto:a-lael@conservewa.net)



## Organization of the Kittitas County Conservation District

A political subdivision of the State of Washington – authorities, powers and structure in RCW 89.08.

- *In 1939, the State Soil Conservation District Law was passed by the Washington State Legislature. There was widespread support in the Kittitas Valley for establishment of the Kittitas Conservation District in 1942. By 1947, landowners in northern Kittitas County established the Cle Elum Conservation District. In 1962, the Kittitas and Cle Elum Conservation Districts were combined to form the Kittitas County Conservation District (KCCD).*

## Function of the Kittitas County Conservation District

- *To make available technical, financial and educational resources, whatever their source, and focus or coordinate them so that they meet the needs of the local land manager with conservation of soil, water and related natural resources.*

## Who We Serve & Why

- *We serve all citizens of our community (county, state, country) to ensure the long-term use of natural resources in an economically, socially and environmentally sustainable manner using non-regulatory, voluntary approaches.*

## Mission of the Kittitas County Conservation District

- *Provide leadership, technical, educational and financial assistance to landowners and land users in their utilization and management of natural resources.*

## Vision of the Kittitas County Conservation District

- *The Kittitas County Conservation District is recognized by all private landowners as a source of financial, technical and educational assistance in Kittitas County; and by local, state and federal authorities as the organization of choice to implement on-the-ground stewardship activities.*

## Values of the Kittitas County Conservation District

*The Kittitas County Conservation District respects and honors both private and public lands, as well as natural resources and people. We demonstrate this by valuing:*

- *Integrity and Honesty*
- *Innovative approaches and new ideas*
- *Serving those that voluntarily engage us*
- *Fiscal and public responsibility*
- *Locally-led, economically sustainable resource conservation*
- *On the ground, science-based solutions*
- *Stewardship for our properties/resources*
- *Sustainability – meaning implementation of economically and environmentally sound and socially acceptable conservation practices*
- *Strong partner relationships with government, nongovernment and tribal entities for efficient and effective program delivery*

## Critical Geographic Areas:

- *Critical geographic areas include private, local government, and state government owned lands in the KCCD boundaries (all unincorporated lands and the cities of Cle Elum and Roslyn) with emphasis on working landscapes (forestland, rangeland and cropland).*

## Criteria for Selecting Conservation Priorities

- *Impact on long term sustainability of agriculture*
- *Documented assessments and data indicating the specific conservation need*
- *Ability to assist landowners and managers with regulatory compliance*
- *Public health and safety*
- *Potential impact on climate change*
- *Available funding to address conservation needs*
- *Opportunities leverage resources and funding to address multiple concerns*
- *Impact on native habitats and wildlife*

## Natural Resource Priorities, Measures of Success and Goals:

Priorities and Goals	Measures of Success
<p><b>Water Quantity</b> (Insufficient Water)</p> <p><b>Goal:</b> Improve irrigation water delivery and use efficiencies and improve instream flow conditions in Yakima River tributaries</p>	<ul style="list-style-type: none"> <li>By 2026, improve water delivery and use efficiency through conservation measures (on-farm and within irrigation entities) on 3,000 acres of irrigated crop and pastureland.</li> <li>By 2024, develop urban water conservation program through the Heritage Gardens Program, completing certification of 10 gardens, and implementing a demonstration garden.</li> <li>By 2026, meet all 10-year goals and benchmarks for protecting and enhancing critical areas while maintaining agricultural viability as detailed in the Kittitas County Voluntary Stewardship Program Plan.</li> </ul>
<p><b>Forest Health</b> (Degraded Plant Condition)</p> <p><b>Goal:</b> Increase resiliency of forest lands in Kittitas County</p>	<ul style="list-style-type: none"> <li>By 2026, treat 2,000 acres in coordination with and support of DNR's 20 Year Forest Health Strategic Plan Eastern Washington.</li> <li>By 2024, develop and implement fire resistant landscaping program for urban lands and implement one demonstration garden.</li> </ul>
<p><b>Water Quality</b> (Excess sediment or nutrients and temperature in surface or groundwater)</p> <p><b>Goal:</b> Document improved water quality conditions at TMDL compliance points</p>	<ul style="list-style-type: none"> <li>By 2026, implement projects (sprinkler conversions, riparian plantings, etc.) on 400 acres that directly reduce sediment contributions for continued improvement of water quality parameters in the active Water Quality Clean Up Plans in Kittitas County.</li> <li>By 2026, meet all 10-year goals and benchmarks for protecting and enhancing critical areas while maintaining agricultural viability as detailed in the Kittitas County Voluntary Stewardship Program Watershed Plan.</li> </ul>
<p><b>Range Health</b> (Degraded Plant Condition)</p> <p><b>Goal:</b> Document improved range health using NRCS Similarity Index</p>	<ul style="list-style-type: none"> <li>By 2026, provide technical assistance for conservation planning on 1,000 acres of working shrub steppe rangeland in Kittitas County.</li> <li>By 2026, meet all 10-year goals and benchmarks for protecting and enhancing critical areas while maintaining agricultural viability as detailed in the Kittitas County Voluntary Stewardship Program Watershed Plan.</li> </ul>
<p><b>Soil Quality &amp; Health</b> (Soil Erosion)</p> <p><b>Goal:</b> Maintain soil productivity and health to meet or exceed NRCS soil quality criteria</p>	<ul style="list-style-type: none"> <li>Increase soil quality health through cover crop implementation and monitoring on 500 acres by 2026.</li> <li>By 2026, meet all 10-year goals and benchmarks for protecting and enhancing critical areas while maintaining agricultural viability as detailed in the Kittitas County Voluntary Stewardship Program Watershed Plan.</li> </ul>
<p><b>Fish &amp; Wildlife Habitat</b> (Habitat Degradation)</p> <p><b>Goal:</b> Increase the quantity and quality of fish and wildlife habitat in Kittitas County</p>	<ul style="list-style-type: none"> <li>By 2026, complete installation of approved fish screen and fish passage facilities for the identified high priority areas, screening at least 40 cubic feet per second of diverted irrigation rights and opening 10 miles of stream habitat for listed salmonids.</li> <li>By 2026, complete 100 acres of upland and riparian plantings to improve habitat for terrestrial and aquatic species.</li> <li>By 2026, meet all 10-year goals and benchmarks for protecting and enhancing critical areas (fish &amp; wildlife priority habitats, wetlands) while maintaining agricultural viability as detailed in the Kittitas County Voluntary Stewardship Program Watershed Plan.</li> </ul>
<p><b>Working Lands Protection</b> (Loss of working lands)</p> <p><b>Goal:</b> Preserve heritage and natural resource value of working lands in Kittitas County</p>	<ul style="list-style-type: none"> <li>By 2024, develop and secure funding to implement conservation easements (farmland or forestland preservation) in Kittitas County.</li> <li>By 2026, protect 200 acres of farmland through conservation easements.</li> </ul>
<p><b>Disaster Response</b> (Flood, Fire, etc.)</p>	<ul style="list-style-type: none"> <li>By 2023, install four back-up generators for critical infrastructure.</li> </ul>

<b>Goal:</b> Continuously build community capacity to improve resiliency in the face of natural disasters	<ul style="list-style-type: none"> <li>▪ <i>By 2026, seek and secure at least one grant for additional priority community resiliency actions.</i></li> <li>▪ <i>By 2026, assist 30 communities and 500 landowners with home and community defensible space assessments.</i></li> <li>▪ <i>By 2026, participate in updates of the Kittitas County Wildfire Protection Plan (CWPP) and Kittitas County Hazard Mitigation Plan.</i></li> </ul>
---	---

### Information – Education Priorities, Measures of Success, and Goals:

Priorities and Goals	Measures of Success
<p style="text-align: center;"><b>Education</b></p> <p><b>Goal:</b> Provide educational opportunities for students (K-12), landowners, land managers and the general public regarding natural resource priorities and improving landscape resiliency. Measures of success include:</p>	<ul style="list-style-type: none"> <li>▪ <i>Annually, reach all landowners/users in Kittitas County through a newsletter mailed to all rural routes and residents of the Cities of Cle Elum and Roslyn</i></li> <li>▪ <i>Annually, reach 30% of landowners/users in Kittitas County through KCCD website and social media, community events (e.g. Kittitas County Fair), specific conservation issue workshops, public meetings, and/or field days</i></li> <li>▪ <i>Development outreach materials and opportunities focused specifically for new landowners including updates to the Small Ranch Manual and/or Rural Living Handbook and virtual or in-person workshops (e.g. Small Acreage Workshops created with WSU Extension Kittitas County)</i></li> <li>▪ <i>Reach all third-grade students through the annual Agriculture Appreciation Day facilitated by KCCD at the Kittitas County Event Center</i></li> <li>▪ <i>Annually, reach at least 50% of students (K-12) in Kittitas County by supporting specific classroom curriculum (e.g. Salmon in the Classroom and Wheat Week), supplemental classroom materials (e.g. Washington Agriculture in the Classroom), and field events (e.g. KEEN summer camps, etc.)</i></li> <li>▪ <i>Support the farm to school project at the Thorp School District and promote similar projects in other school districts</i></li> <li>▪ <i>Ensure all outreach materials are offered in formats that provide the maximum access to members of the public and landowners/land managers in Kittitas County</i></li> </ul>

### District Operations Priorities Measures of Success, and Goals:

Priorities and Goals	Measures of Success
<p><b>KCCD Operations</b></p> <p><b>Goal:</b> Maintain capacity to deliver programs that meet the needs of landowners and resource users and sustain the reputation for being a locally led problem solving group practicing fiscal responsibility.</p>	<ul style="list-style-type: none"> <li>▪ <i>Annually, achieve compliance through the Conservation Accountability and Performance Program (CAPP) or equivalent with the Washington State Conservation Commission. This ensures KCCD is fulfilling legal requirements as Political Subdivisions of the State of Washington and complying with all laws and the Washington Administrative Code. It includes long range and annual planning and reporting, financial reporting, audits, Supervisor elections and appointments, Open Public Meetings Act, State Ethics, compliance with Commission Master Agreement, informing the public of KCCD activities, and demonstrated diligence complying with state and federal statutes.</i></li> <li>▪ <i>Maintain and increase staff technical certifications (conservation planners, professional engineer, GIS Specialist, etc.) through the Conservation Technical Development (CTD) and other available training opportunities</i></li> </ul>

	<ul style="list-style-type: none"> <li>▪ <i>Maintain KCCD facilities (office building) for long term financial stability.</i></li> <li>▪ <i>Continually research and secure funding sources for on-the-ground activities with landowners/land managers</i></li> </ul>
--	---

## **Trends Impacting Conservation in the Kittitas County Conservation District**

- *Demand for water supply (in Yakima Basin) for fish, agriculture and municipal needs*
- *Continued conversion of agriculture and forest working lands for housing developments*
- *Continued subdividing of agricultural lands into smaller rural parcels and the influx of landowners with limited land management knowledge*
- *Availability of financial assistance (cost share) for landowners interested in implementing practices*
- *Climate change (e.g. predictions of similar precipitation, but more as rain and less as snowpack)*
- *Increasing recreational uses/activities*
- *Economic factors (fluctuating commodity prices, fuel costs, etc.)*
- *Interest in renewable resources (e.g. wind, solar, biomass) and energy conservation incentive programs, as well as siting of new facilities*
- *Water quality degradation and need to implement water cleanup plans (TMDLs) - currently sediment, nutrient and temperature*
- *Need for response, recovery and prevention of damage from natural disaster events (floods, fire)*
- *Regulatory pressure under Endangered Species Act (Summer Steelhead, Bull Trout, Gray Wolves, etc.)*

## **Strategies, Services & Products to Address Trends**

*Strategies, services and/or products the district board, staff, and partners suggest to address the trends, include the following:*

- *Maintain and grow District staff technical skills including engineering, conservation planning, GIS, etc.*
- *Prioritize one-on-one technical assistance with producers and landowners*
- *Provide educational opportunities, including tours and workshops, to promote specific conservation practices*
- *Engage Supervisor and Associate Supervisor Candidates with diverse skills, interests and geographic locations*
- *Be a trusted partner to landowners/land managers, local, state and federal agencies, tribes, non-government organizations and other stakeholders working in Kittitas County*
- *Seek and secure funding through available and appropriate sources to fund conservation practices in all land types*
- *Develop education and outreach effort targeting new/inexperienced landowners for assistance understanding location agricultural and conservation practices*
- *Continuously monitor new and developing efforts (e.g. Sustainable Farms and Fields) for local landowner/producer opportunities*
- *Maintain and strengthen the partnership with the Confederated Tribes and Bands of the Yakama Nation*
- *Actively participate in and/or lead collaborative groups and processes including the Yakima Tributary Access & Habitat Program, Kittitas Fire Adapted Communities Coalition, Kittitas County Voluntary Stewardship Program, Yakima Basin Integrated Water Management Plan, and others as they develop*
- *Continue work with Conservation Strategies stakeholders in Kittitas County and explore funding and assistance with the Office of Farmland Preservation, USDA NRCS, Recreation & Conservation Office, etc.*
- *Actively participate in the Big Bend Local Work Group and the State Technical Advisory Committee (STAC) while maintaining and strengthening the partnership with USDA NRCS*
- *Continue to partner with local on-the-ground implementers like Kittitas County Flood Control Zone District, Mid-Columbia Regional Fisheries, Kittitas Conservation Trust, etc.*

## **Natural Resource Data:**

KCCD's focus is on creating and maintaining resilient working landscapes across Kittitas County. KCCD includes 1,493,384 acres in the center of Washington State stretching from the crest of the Cascades to the shores of the Columbia River. Two of the five incorporated cities in Kittitas County, Cle Elum and Roslyn, are included within the KCCD boundaries. The unincorporated areas have a population of 20,382, while Cle Elum has 1,875 residents and Roslyn has 890 residents. Together that represents 50% of the total population of Kittitas County.

The area within the KCCD boundaries can be divided into the following land types:

Type	Acres	Percent of Total
Range and Non-Irrigated	498,734	33.4%
Irrigated Cropland	138,886	9.3%
Forestland	828,261	55.5%
Lakes	24,050	1.6%
Incorporated (Cle Elum and Roslyn)	3,453	0.2%

Approximately 400,000 acres are privately owned and managed in the KCCD including all the irrigated lands, 40% of the range/non irrigated lands and a little more than 10% of the forestlands. The remaining lands are owned by state and federal agencies who manage more than 72% of the land base.

More than 700 miles of streams and rivers flow through forestland, rangeland, irrigated agricultural lands and urban lands in Kittitas County. Nearly all streams are over allocated, creating low flows to supply irrigation needs and support resident and anadromous fisheries as well as streamside and floodplain vegetation. Drought resiliency and efficient use of irrigation water is the highest priority in Kittitas County, followed closely by Water Quality. Water quality is important in these waterways to ensure public health, provide irrigation water, and for salmonids and resident fish species as well as upland wildlife species.

The DNR Forest Health 20 Year Strategic Plan identifies several HUC 5 watersheds in Kittitas County as the highest priority level for treatment. This includes the Swauk, Teanaway, Cle Elum, Taneum and Manastash watersheds. These areas represent many of the most urgent forest health issues in the eastern Cascades, including wildfire risk to communities and forests, endangered species, insects and disease, and climate change. The highest priority treatments for forest health and wildfire resiliency are recommended for parcels with homes. On public and private forestland without homes, its recommended to create larger patches of open canopy for more fire-resistant forest to facilitate fire protection for communities.

Fish and Wildlife species that are listed under the federal Endangered Species Act (ESA) or listed by Washington State as threatened or endangered or species of concern are priority resource issues. Current species listed as threatened under ESA include Gray Wolf, Grizzly Bear, Northern Spotted Owl, Mid-Columbia Summer Steelhead, and Bull Trout. Species listed as endangered by the state include Gray Wolf, Fisher, Greater Sage Grouse, American White Pelican, Northern Spotted Owl, and Ferruginous Hawk. The State also lists the Western Gray Squirrel as threatened.

Soil quality, including excess and/or loss of nutrients and the prevention of soil erosion are important resource concerns especially for the 90,000 acres of irrigated land in Kittitas County as documented in the NRCS 2012 State Resource Assessment. Practices including reduced tillage and cover crops can stabilize the soil and reduce the use of fossil fuel based commercial fertilizer.

Non irrigated range land in Kittitas is synonymous with shrub steppe habitat. NRCS's 2012 State Resource Assessment identified "undesirable plant productivity and health", "degraded habitat condition", and "excessive plant pest pressure" on range land as priority resource concerns in Kittitas County. In addition, wildfire risk on rangeland is substantial as evidenced by multiple recent fires in eastern Kittitas County that significantly impacted grazing lands and wildlife habitat as well as threatening communities. Mitigating that risk through livestock grazing is an essential tool in creating wildfire resilient communities and landscapes.

An assessment of tax parcels within the KCCD boundaries indicates that between 2016 and 2021, there was an increase of nearly 11% indicating subdivision of larger parcels. The tax parcels classified as

residential with improvements valued greater than \$50,000 increased by 30% in that same time period reflecting the home building boom. In the period from 2010 to 2019, Kittitas County's population grew 17.2%, exceeding the state's 13.2% growth rate during the same timeframe<sup>1</sup>. This rapid population growth in Kittitas County appears to have accelerated as the pandemic enabled some who formerly lived and worked in large metropolitan areas to telework from and reside in less-densely populated areas. This growth provides significant challenges to working landscapes in Kittitas County.

## Staffing Needs

Maintain the following current positions (same position may have multiple abilities):

- District Manager
- Financial Manager
- GIS Specialist
- Project Manager
- Engineer
- Resource Technicians
- Conservation Planners
- Construction Observer
- Grant Writer
- Outreach Specialist
- Contract Specialist
- Fuels Reduction Specialist
- Riparian Restoration Specialist
- Meeting Facilitator

Add the following positions or responsibilities: Assistant District Manager

## Annual Budget Needs

- Summary of the annual budget needed to carry out the plan of the KCCD based on the above information.

Object	Budget
<b>Salaries &amp; Wages</b>	<b>\$512,900</b>
<b>Personnel Benefits</b>	<b>\$188,840</b>
<b>Supplies</b>	
Office & Operating Supplies	\$84,000
Fuel Consumed	\$7,300
Small Tools & Minor Equipment	\$2,375
Repairs and Maintenance (Vehicles)	\$2,500
	<b>\$96,175</b>
<b>Services</b>	
Professional Services	\$470,000
Communication	\$4,620
Travel	\$2,750
Advertising	\$2,500
Insurance	\$15,000
Utilities	\$9,500
Property Taxes	\$7,875
Miscellaneous	\$28,500
Project Construction	\$900,000
	<b>\$1,440,745</b>
<b>Capital Facilities- Payments</b>	<b>\$81,340</b>
<b>Cost Share</b>	<b>\$1,230,000</b>
<b>Contingency Reserve</b>	<b>\$50,000</b>
	<b>\$3,600,000</b>

## Key Decision Makers

<sup>1</sup> Information retrieved from <https://esd.wa.gov/labormarketinfo/county-profiles/kittitas>, December 1, 2021

The first and most important key decision maker is the landowner or land manager. Their management decisions affect the condition of natural resources daily. The next level is the KCCD Board of Supervisors who direct and oversee the annual and long-range plans of the KCCD. There are a multitude of other key decision makers who can affect regulations governing land management and resources and sources of funding to establish and maintain technical and financial assistance programs in Kittitas County. They are:

#### **LOCAL**

- **City of Cle Elum**, Mayor Jay McGowan
- **City of Roslyn**, Mayor Brent Hals
- **Kittitas County**,  
Commissioner Brett Wachsmith  
Commissioner Cory Wright  
Commissioner Laura Osiadacz

#### **STATE**

- **13<sup>th</sup> Legislative District**, Senator Judy Warnick
- **13<sup>th</sup> Legislative District**, Rep. Tom Dent
- **13<sup>th</sup> Legislative District** Rep. Alex Ybarra
- **Washington State Conservation Commission**, Kirk Robinson, Acting Executive Director
- **Washington Department of Agriculture**, Derek Sandison, Director
- **Washington Department of Ecology**, Laura Watson, Director
- **Washington Department of Fish & Wildlife**, Kelly Susewind, Director
- **Washington Department of Natural Resources**, Hilary Franz, Commissioner of Public Lands
- **Washington Emergency Manager Division**, Robert Ezelle, Director
- **Office of the Governor**, Governor Jay Inslee

#### **TRIBAL**

- **Confederated Tribes and Bands of the Yakama Nation**, Phil Rigdon, Deputy Director, Department of Natural Resources and Delano Saluskin, Chairman, Yakama Tribal Council

#### **REGIONAL/FEDERAL**

- **USDA Natural Resources Conservation Service**, Roylene Comes at Night, State Conservationist
- **USDA Farm Service Agency**, Mike Mandere, Acting State Executive Director
- **USDA Forest Service**, Glenn Casamassa, Regional Forester, Pacific Northwest Region
- **US Army Corps of Engineers**, Muffy Walker, Chief, Seattle District Regulatory Branch
- **US Bureau of Land Management**, Kurt Pindel, District Manager, Spokane District
- **US Environmental Protection Agency**, Michelle Pirzadeh is the Acting Regional Administrator, Region 10
- **US Fish & Wildlife Service**, Kate Terrell, Habitat Restoration and Conservation Program Lead, Mid-Columbia Fish & Wildlife Conservation Office
- **NOAA National Marine Fisheries Service**, Michael Tehan, Assistant Regional Administrator, Interior Columbia Basin Office
- **Northwest Power and Conservation Council**, Guy Norman and Patrick Oshie (Washington Council member)
- **Bonneville Power Administration**, John Hairston, Administrator

#### **NATIONAL**

- **US House of Representatives**, Representative Kim Schrier
- **US Senate**, Senator Maria Cantwell
- **US Senate**, Senator Patty Murray

### **Benchmarks, Timeline, & Actions:**

- The following tables include benchmarks, timelines and 12-month actions for each of the previously identified strategic priorities.

#### **Priority: Water Quantity**

**Measurable Goal:** Improve irrigation water delivery and use efficiencies and improve instream flow conditions in Yakima River tributaries.

<b>Benchmarks</b>	<b>Timeline</b>	<b>12 Month Actions</b>
<b>Implement Water</b>	Jan 2022 to	Through cost share agreements, complete at least two large

<b>Conservation Projects</b>	<i>Dec 2022</i>	<i>projects (750 acres) to convert from rill to sprinkler irrigation systems and continue Small Project Cost Share program with priority for water conservation projects.</i>
<b>EQIP/RCPP Water Conservation Projects</b>	<i>Jan 2022 to Dec 2022</i>	<i>Work with USDA NRCS to continue to develop and implement sprinkler conversion projects through RCPP and EQIP WaterSMART initiative.</i>
<b>Coordinate with Yakima Basin Integrated Water Resource Management Plan</b>	<i>Jan 2022 to Dec 2022</i>	<i>Attend meetings and monitor activities under the Integrated Plan to identify opportunities to partner with other stakeholders (e.g. Kittitas Reclamation District) and for funding to implement KCCD priorities.</i>
<b>Assist KRD Stream Supplementation Program</b>	<i>Jan 2022 to Dec 2022</i>	<i>Continue to monitor stream flows in Manastash Creek, including the water diverted &amp; Trust Water in cooperation with KRD and to assist KRD as needed in other tributaries.</i>

**Priority:** Forestry

**Measurable Goal:** *Increase resiliency of forest lands in Kittitas County.*

<b>Milestones</b>	<b>Timeline</b>	<b>12 Month Actions</b>
<b>Complete fuels reduction projects private forestland</b>	<i>Jan 2022 to Nov 2022</i>	<i>Complete cost share agreements with private landowners in FEMA grant priority areas (South Cle Elum Ridge, North Cle Elum Ridge, Sunlight Waters and Middle Fork Teanaway)</i>
<b>Conduct forestry assessments</b>	<i>Jan 2022 to Dec 2022</i>	<i>Assess 50 acres of private forestland in cooperation with DNR's local Landowner Assistance Forester. Assessments will focus on forest health and wildland fire risks.</i>
<b>Kittitas Fire Adapted Communities Coalition</b>	<i>Jan 2022 to Dec 2022</i>	<i>Continue active participation in KFACC by attending monthly meetings, subcommittee meetings and workshops as needed to develop cross boundary actions for forest health and fire resiliency.</i>

**Priority:** Water Quality

**Measurable Goals:** *Document improved water quality conditions at TMDL compliance points*

<b>Milestones</b>	<b>Timeline</b>	<b>12 Month Actions</b>
<b>Water Quality Monitoring</b>	<i>Jan 2022 to Dec 2022</i>	<i>Support the work of the Kittitas County Water Purveyors and meet as needed with Ecology to coordinate activities.</i>
<b>Construct irrigation system conversion projects</b>	<i>Jan 2022 to Dec 2022</i>	<i>Complete at least two projects to convert to sprinkler irrigation systems in high priority locations focused on water quality improvements (reducing sediment transport to streams).</i>
<b>Reduce Irrigation Induced Soil Erosion</b>	<i>Jan 2022 to Dec 2022</i>	<i>Continue to implement PAM Cost Share Program utilizing funding from County, Conservation Commission and Special Assessment</i>
<b>Livestock Management</b>	<i>Jan 2022 to Dec 2022</i>	<i>Offer technical assistance to livestock owners to protect water quality (e.g. fencing, rotational grazing, watering facilities, etc.)</i>

**Priority:** Fish & Wildlife

**Measurable Goal:** *Increase the quantity and quality of fish and wildlife habitat in Kittitas County*

<b>Milestones</b>	<b>Timeline</b>	<b>12 Month Actions</b>
<b>Yakima Tributary</b>	<i>Jan 2022 to</i>	<i>Continued active participation YTAHP core team, developing</i>

<b>Access &amp; Habitat Program</b>	<i>Dec 2022</i>	<i>projects, seeking matching funds and partnering, along with successful completion of BPA's Review of Anadromous Fish Habitat and Hatchery Projects to ensure future funding.</i>
<b>Plan, Design and Permit Fish screen and Fish Passage Projects</b>	<i>Jan 2022 to Dec 2022</i>	<i>With consulting engineers, plan and design eight projects on Naneum Creek, Coleman Creek, and Caribou Creek. Conduct design reviews through YTAHP Technical Work Group meetings and work with WDFW to begin permitting processes.</i>
<b>Fish screen and Fish Passage Projects Construction</b>	<i>Jan 2022 to Dec 2022</i>	<i>Remove fish passage barriers on Coleman Creek and Caribou Creek and install a fish screen on a Coleman Creek irrigation diversion.</i>
<b>Native Plantings for Habitat</b>	<i>Jan 2022 to Dec 2022</i>	<i>Develop, complete and monitor upland and riparian habitat plantings on 10 acres both directly and through a partner agreement with Mid-Columbia Regional Fisheries Enhancement Group.</i>
<b>Fish Monitoring</b>	<i>Jan 2022 to Dec 2022</i>	<i>Continue to work with and support WDFW and Yakama Nation monitoring of fish runs through PIT tag arrays in tributaries of the Yakima River.</i>

**Priority:** Working Lands Protection

**Measurable Goal:** *Preserve heritage and natural resource value of working lands in Kittitas County*

<b>Milestones</b>	<b>Timeline</b>	<b>12 Month Actions</b>
<b>Develop Conservation Easement Projects and Seek Funding</b>	<i>Jan 2022 to Dec 2022</i>	<i>Continue to attend monthly Conservation Strategies Meeting led by Kittitas Conservation Trust and communicate with Office of Farmland Preservation regarding potential projects and funding sources.</i>
<b>Agricultural Viability</b>	<i>Jan 2022 to Dec 2022</i>	<i>Through implementation of VSP, continue to work on issues to maintain and enhance agricultural viability (e.g. options for mobile livestock slaughter units).</i>

**Priority:** Soils

**Measurable Goal:** *Maintain soil productivity and health to meet or exceed NRCS soil quality criteria.*

<b>Milestones</b>	<b>Timeline</b>	<b>12 Month Actions</b>
<b>Cover Crops</b>	<i>Jan 2022 to Dec 2022</i>	<i>Provide technical assistance to producers interested in implementing cover crops</i>
<b>Reduce Irrigation Induced Soil Erosion</b>	<i>March 2022 to Dec 2022</i>	<i>Continue to offer the PAM Cost Share program to growers to reduce soil erosion.</i>
<b>Monitor Chlorophyll levels in Hay Crops</b>	<i>April 2022 to Oct 2022</i>	<i>Support the efforts of the Organization of Kittitas County Timothy Hay Growers &amp; Suppliers to monitor chlorophyll levels and utilize the data to make decisions regarding nutrient applications.</i>

**Priority:** Range

**Measurable Goal:** *Document improved range health using NRCS Similarity Index.*

<b>Milestones</b>	<b>Timeline</b>	<b>12 Month Actions</b>
<b>Conduct Rangeland Monitoring</b>	<i>Jan 2022 to Dec 2022</i>	<i>Support rangeland monitoring effort by WSU Extension (staff) by providing staff to assist with field work.</i>
<b>Provide technical and financial assistance</b>	<i>Jan 2022 to Dec 2022</i>	<i>Support NRCS and WSU Extension's efforts to provide technical &amp; financial assistance to rangeland operators as</i>

		<i>requested.</i>
<b>Monitor Wild Horse Conservation Easement</b>	<i>March 2022 to Oct 2022</i>	<i>Continue to conduct annual monitoring on Wild Horse Wind &amp; Solar Facility lands, including photo-monitoring of springs developed for livestock.</i>

**Priority:** Disaster Response

**Measurable Goal:** *Continuously build community capacity to improve resiliency in the face of natural disasters.*

<b>Milestones</b>	<b>Timeline</b>	<b>12 Month Actions</b>
<b>Firewise USA Communities</b>	<i>Jan 2022 to Dec 2022</i>	<i>Assist established communities with annual certifications and assist additional communities to become newly recognized as Firewise USA Communities.</i>
<b>Defensible Space</b>	<i>Jan 2022 to Dec 2022</i>	<i>Conduct defensible space assessments for 80 homeowners and up to 15 communities either as part of community chipping programs or as requested by homeowners or communities.</i>
<b>Back-Up Generators</b>	<i>Jan 2022 to Dec 2022</i>	<i>Install four back-up generators in cooperation with Kittitas County Fire District No. 1, Kittitas County Fire District No. 6, City of Cle Elum and Cle Elum/Roslyn/South Cle Elum Police Department</i>
<b>Community Chipping Program</b>	<i>March 2022 to Nov 2022</i>	<i>Work with Kittitas County Fire Districts and Washington DNR to fund and facilitate a chipping crew to serve communities in high priority areas.</i>
<b>Defensible Space</b>	<i>March 2022 to Nov 2022</i>	<i>Work with Cle Elum, Roslyn and Ronald to complete fuels reduction projects in priority locations as identified in FEMA grant 5182.</i>
<b>Funding Sources</b>	<i>Jan 2022 to Dec 2022</i>	<i>Investigate and apply for funding sources (e.g. FEMA) to assist with community disaster resiliency where appropriate</i>

**Priority:** Information - Education

**Measurable Goal:** *Provide educational opportunities for students (K-12), landowners, land managers and the general public regarding natural resource priorities and improving landscape resiliency.*

<b>Milestones</b>	<b>Timeline</b>	<b>12 Month Actions</b>
<b>KCCD Newsletter</b>	<i>Sept 2022 to Nov 2022</i>	<i>Publish KCCD Newsletter and mail to all rural routes and Cle Elum and Roslyn</i>
<b>Maintain and Update Website and Social Media</b>	<i>Jan 2022 to Dec 2022</i>	<i>Maintain website as a source of technical and educational resources for landowners/managers and the public and utilized social media as appropriate for outreach.</i>
<b>Support Natural Resource School Curriculum</b>	<i>Jan 2022 to Dec 2022</i>	<i>Support Franklin Conservation District's implementation of Wheat Week in Kittitas County Schools; Agriculture in the Classroom; Salmon in the Classroom; KEEN summer camps and other programs that may develop.</i>
<b>Agriculture Appreciation Day</b>	<i>Jan 2022 to April 2022</i>	<i>Facilitate the Agriculture Appreciation Day for third graders at the Kittitas County Event Center.</i>
<b>Farm to School Program</b>	<i>Jan 2022 to Dec 2022</i>	<i>Support Thorp School District's Farm to School project and promote similar projects with other schools in Kittitas County</i>
<b>Provide KCCD Program Information</b>	<i>Jan 2022 to Dec 2022</i>	<i>Present to Association of Kittitas County Hay Growers &amp; Suppliers, Kittitas County Farm Bureau, Kittitas County</i>

<b>to Stakeholder Groups</b>		<i>Cattlemen, and other stakeholders as requested.</i>
<b>Cover Crops and Soil Health</b>	<i>Jan 2022 to Dec 2022</i>	<i>Provide specific outreach opportunities (workshop, tour, etc.) focused on soil health and the implementation of cover crops.</i>
<b>Wildlife Depredations</b>	<i>Jan 2022 to Dec 2022</i>	<i>Work with WDFW, VSP Watershed Group and others on the carcass dumping issues as related to gray wolf interactions with livestock producers including outreach to livestock producers and carcass composting workshop(s).</i>
<b>Develop Urban Lands Landscaping Program</b>	<i>Jan 2022 to Dec 2022</i>	<i>Implement the Heritage Gardens program with the assistance of the Benton Conservation District to reduce water use and develop and include a Fire-Resistant Landscaping option for homeowners in fire prone areas.</i>
<b>New Landowner Outreach Materials</b>	<i>March to Dec 2022</i>	<i>Update Small Ranch Manual and or Rural Living Handbook for distribution to new landowners in Kittitas County.</i>

**Priority:** KCCD Operations

**Measurable Goal:** *Maintain capacity to deliver programs that meet the needs of landowners and resource users and sustain the reputation for being a locally led problem solving group practicing fiscal responsibility*

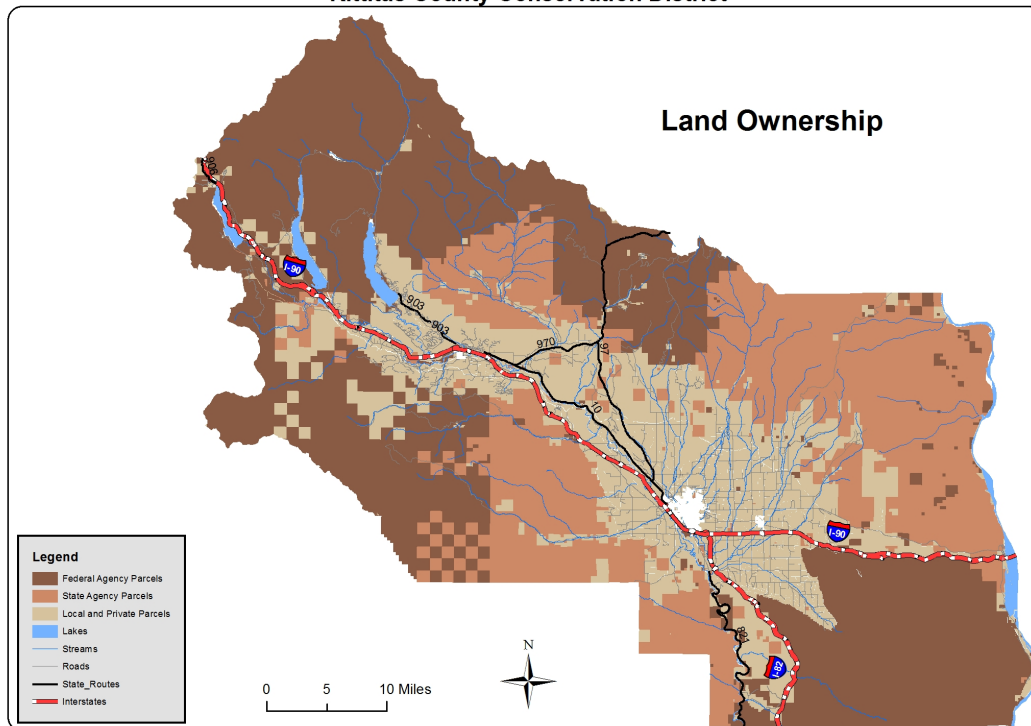
<b>Milestones</b>	<b>Timeline</b>	<b>12 Month Actions</b>
<b>Conservation Accountability and Performance Program</b>	<i>Jan 2022 to Dec 2022</i>	<i>Achieve compliance through the Conservation Accountability and Performance Program (CAPP) including Board of Supervisors elections and appointments, open public meetings, financial reporting, audits, compliance with Conservation Commission agreements, etc.</i>
<b>Complete grant vouchers &amp; progress and final reports</b>	<i>Jan 2022 to Dec 2022</i>	<i>KCCD District Manager and Financial Manager complete vouchers and reports for all current and new grants</i>
<b>Single Federal Audit</b>	<i>June 2022 to Sept 2022</i>	<i>A single federal audit will be requested due to the expenditure of federal funds in excess of \$750,000 in 2021.</i>
<b>Complete staff training plans</b>	<i>Jan 2022 to June 2022</i>	<i>Update staff training plans to utilize courses and certifications available through the Center for Technical Development and WADE Training, as well as other appropriate courses for each staff member</i>
<b>Associate Supervisors</b>	<i>Jan 2022 to Dec 2022</i>	<i>Recruit Associate Supervisors to diversify interest, talent and geographic location on the Board of Supervisors</i>
<b>KCCD System of Rates &amp; Charges</b>	<i>Jan 2022 to Dec 2022</i>	<i>Update the tax rolls as required by the Kittitas County Assessor and report activities and expenditures to the Board of County Commissioners</i>

**Washington Conservation Districts assisting land managers with their conservation choices**



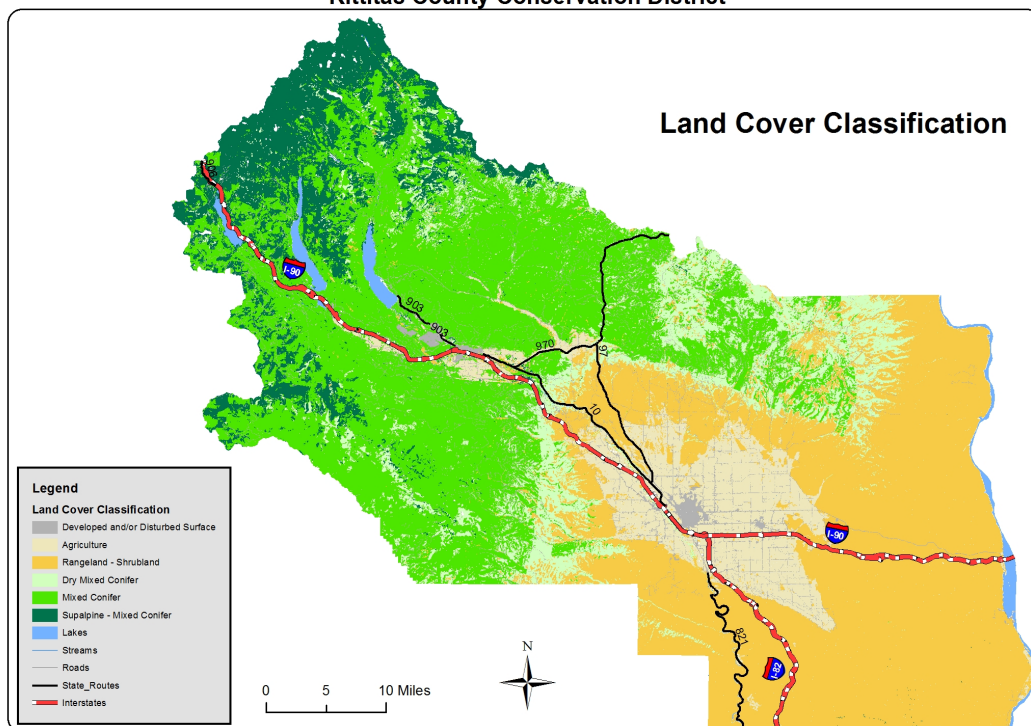
## Appendix A – Maps

Kittitas County Conservation District



This data is provided "as is" without warranty of any kind. Further, the Kittitas County Conservation District does not warrant, guarantee, or make any representations regarding the use of, or results from the use of the data in terms of correctness, accuracy, reliability, currentness, or otherwise. Hydrology layer is in draft form. Parcel layer was obtained from the Kittitas County Assessor and is not survey quality. Produced by the Kittitas County Conservation District 11/26/2021

Kittitas County Conservation District



This data is provided "as is" without warranty of any kind. Further, the Kittitas County Conservation District does not warrant, guarantee, or make any representations regarding the use of, or results from the use of the data in terms of correctness, accuracy, reliability, currentness, or otherwise. Hydrology layer is in draft form. Parcel layer was obtained from the Kittitas County Assessor and is not survey quality. Produced by the Kittitas County Conservation District 11/26/2021