

The Kittitas County Conservation District Presents:
The 15th Annual Roy & Marge Bach Memorial Plant Sale



In memory of local residents Roy & Marge Bach. Roy was an avid outdoorsman and friend of the Kittitas County Conservation District. His wife Marge Bach worked for the district for 30 years and also served as an Associate Supervisor.



The Roy & Marge Bach Memorial Conservation Plant Sale is an annual fundraiser conducted by the Kittitas County Conservation District (KCCD). The proceeds of our plant sale go toward scholarships for educational materials and transportation costs for natural resource field trips, agricultural farm tours and other related educational activities for local youth. Our goal is to educate the leaders of tomorrow



about the importance of natural resources and to direct them toward becoming responsible land stewards.

We anticipate a successful plant sale and appreciate your support because it is vital to the continued success of our local conservation programs and educational opportunities.

CONIFERS



Austrian Pine (*Pinus nigra*)

A dense tree that produces long, dark needles. Austrian Pines are very hardy. They thrive in urban locations as well as in wind-breaks in rural settings and can survive in a variety of soils. Branches initially form a pyramidal shape yet at maturity it can sometimes appear flat-topped. A fast growing tree, it tolerates both limestone or acidic soils, dry, rocky locations and windy conditions. Needs full sun exposure. Average height at maturity is 40-50 feet.



Blue Spruce (*Picea pungens*)

Blue spruce is moderately shade tolerant and grows best in deep, rich, gravelly soils, often along stream banks and other sites with high moisture levels. A deep penetrating root system makes the species resistant to being blown over. It has a narrow, pyramidal shape and cone-shaped crown. While blue spruce grows relatively slowly, it is long-lived and may reach ages of 600-800 years. Blue Spruce can reach a height of 65-115 feet at maturity.



Douglas Fir (*Pseudotsuga menziesii*)

This evergreen grows on soils that vary from moist to dry. It is not very tolerant of soils that are compacted or poorly drained. Young seedlings will tolerate some shade, but require ample sunlight to reach maturity. Douglas Fir is a major component of forests throughout North America and one of the world's most valuable timber species. Protection may be needed from damage caused by deer, elk and rodents. Height can reach 200 feet at maturity





Grand Fir (*Pinus grandis*)

Grand Fir is adaptable to a wide range of sites. You'll find these trees in moist sites such as valleys and stream bottoms yet they can also be found as an upland species, growing on drier soils, particularly in the inland Northwest. Grand Fir is an adaptable restoration species that, when planted in moist sites, can grow vigorously enough to compete with other species. On drier upland sites it often occurs as a shade-tolerant species, eventually growing to a dominant species when conditions are suitable. Height can reach 200 feet at maturity.

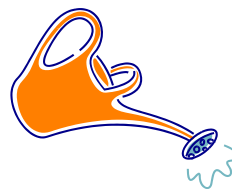


Ponderosa Pine (*Pinus ponderosa*)

Ponderosa Pine is adapted to grow throughout the region. It grows in a wide range of soils, where adequate moisture and drainage is available. It is usually found in areas that receive from 14 to 30 inches of precipitation annually, with much of it coming in the form of snow in the winter. It is tolerant of minimal precipitation in the summer months, although it typically survives seasonal droughts better in medium and coarser textured soils, where moisture is less tightly bound in the soil. It is generally considered intolerant of shade. Ample sunlight is important for good vitality.



Tips for Maintenance



☼ Water the plants for the first couple years (if possible) routinely to make sure they become established.

☼ Cultivate weeds that compete with plants for light, nutrition and moisture (making sure not to disrupt planted roots.)

☼ Mulching 1 foot radius around plants helps keep weeds at bay and with moisture retention.

☼ Wildlife browse prevention is important depending on site. There are multiple methods of browse control depending on the pest.



DECIDUOUS



Choke Cherry (*Prunus virginiana*)

Choke Cherry grows in a wide range of habitats, from riparian areas to dry upland sites. It is most commonly found in sites that are moist and rich. East of the Cascades, where it occurs more frequently, it is found growing in sagebrush, bunchgrass and Ponderosa Pine ecosystems. Choke Cherry is a good restoration and wildlife species. It can grow from 10 to 20 feet tall.



Quaking Aspen (*Populus tremuloides*)

Quaking Aspen prefers planting sites that are moist most of the year. It will tolerate somewhat drier soils but at the cost of reduced vigor and growth potential. Its ornamental attributes are quite obvious and change through the seasons. Quaking Aspen can reach as tall as 80 feet where ample moisture and suitable exposure is available. In sites with only marginal moisture, the trees may only reach 20-30 feet.



Rocky Mt. Maple (*Acer glabrum*)

Rocky Mt. Maple can tolerate moderate shade but also can grow in full sun. It occurs on wetlands, stream banks, canyons and upland mountain slopes. Though it occurs on both moist and dry sites, it is more closely tied to drainages in arid zones. Flowers are greenish-yellow, appearing early in the spring in small clusters. In the fall the leaves turn from light green to reddish-orange. It is a food source and cover for deer and elk in the winter. It can grow anywhere from 10 to 30 feet tall.



Water Birch (*Betula occidentalis*)

Water Birch is a smaller, shrubby Birch species. It creates a spreading canopy that can grow 10 to 15 feet wide. Like other Birch species, Water Birch prefers moist sites. It is most commonly found along streams or other bodies of water or in damp meadows. It tolerates some shade, but prefers moderate to full exposure. It grows to 20 feet tall with multiple stems that arise from the ground and gracefully arch outwards.



TREES & SHRUBS



Blue Elderberry (*Sambucus cerulea*)
Blue Elderberry grows throughout Washington, but is far more predominant in eastern Washington. It can be found growing in a wide range of sites from wet to dry and sunny to shady, however it grows best with ample sun. Blue Elderberry has a variety of uses including riparian habitat restoration, erosion control, shelter belts and wildlife habitat improvement.



Golden Currant (*Ribes aureum*)
Golden Currant can be found growing in a variety of sites. It occurs from damp brushy sites to exposed rocky hillsides. It generally grows best with good sun light. Golden Currant is both a valuable ornamental species and a good conservation plant. The plant produces small berries that attract many species of birds and small mammals. A small shrub, reaching 6 feet tall and spreading 4 to 6 feet wide.



Mackenzie Willow (*Salix rigida mackenzieana*)
Mackenzie Willow is useful in stream bank stabilization, riparian and wildlife habitat improvement, shelterbelts and other uses requiring a moisture tolerant species. Mackenzie Willow grows into a medium sized multi-stem shrub. It can grow to over 12' tall and 15' wide.



Mock Orange (*Philadelphus lewisii*)
Mock Orange grows in a variety of different habitats at lower to middle elevations throughout Washington. It is an excellent soil and stream bank stabilizer, and an important wildlife species. It grows 6 to 12 feet tall with an erect, loosely branched habit. The abundance of white, sweetly-scented flowers makes this shrub quite noticeable in May and June.



TREES & SHRUBS



Red Osier Dogwood (*Cornus stolonifera*)
Red Osier is usually found growing in moist soils, often along streams, lakes and swamps. It is occasionally found growing on open, upland forested sites. It tolerates shade, but prefers sun. Red Osier Dogwood has long been used as a restoration species, as well as an ornamental. Its dense, matting root system makes it useful in stream-side stabilization.



Serviceberry (*Amelanchier alnifolia*)
Serviceberry grows in a wide range of conditions. It tolerates soils that range from moist to dry and coarse to fine. It grows on sites that vary from full sun to shade and on terrain from level to steep. It establishes well in disturbed sites with coarse soils. Its dense, spreading, rhizomatous root system provides good soil stabilization. It typically ranges from 6 to 15 feet tall with an approximately equal spread.



Siberian Pea Shrub (*Caragana Arborescens*)
Siberian Pea Shrub is an upright, deciduous shrub or small tree. Pea shrub is very hardy and useful in adverse situations. It requires little maintenance, is very tolerant of drought, cold winter temperatures and poor soil conditions. Has good tolerance to alkaline soils and deicing salt. Often used as a windbreak or can be pruned into a tall informal hedge. It grows up to 15 feet in height and 10 feet in width and has an oval form.



Smooth Sumac (*Rhus glabra*)
The only shrub or tree species native to all 48 contiguous states. The sour fruit, mostly seed, can be chewed to quench thirst or prepared as a drink similar to lemonade. It is also consumed by birds of many kinds and small mammals, mainly in winter. Deer browse the twigs and fruit throughout the year. The most common sumac; a large shrub or sometimes a small tree with open, flattened crown of a few stout, spreading branches and with whitish sap. Smooth Su-



W. Crowder
USDA NRCS Pullman Plant Materi-

Woods Rose (*Rosa woodsii*)

Woods Rose is found in a wide variety of sites throughout its range. It grows in open, sunny sites, or as an understory species in moderate shade. It is used along streams, lakes and bogs, as well as upland and rocky sites. It prefers moist, well-drained soil and areas that are open and exposed. Woods Rose has long been used as a restoration species. Its matting root system makes it useful in stream-side stabilization. It provides forage and habitat for many species of birds and animals. Woods Rose is a deciduous shrub that grows 6 to 8 feet tall, with a similar spread.



The Fine Print

- * Orders are filled in the order they are received.
- * Plants must be picked up March 30-31, 2012. Location and specific pick up times to be announced. You will be sent a reminder of the dates, times and location of pick-up.
- * **No Guarantee.** This is the only way we can offer affordable prices. We strive to bring you the freshest, highest quality plants available. With proper planting and care, problems are less likely to occur. We will be happy to work with you to assure the best possible survival and growth of your plants.
- * Conservation Grade: Plants are intended and suited for planting shelterbelts, erosion control, wildlife habitats or other conservation purposes where price is a major consideration. Plants are graded only on the merits of their possible survival. Minimal consideration is given to form or other deficiencies which may detract from their appearance in the commercial ornamental nursery trade. Size may vary considerably, although extremes will usually not be included.
- * Contingencies: We reserve the right to prorate or cancel any order, in whole or part, due to strikes, labor shortages, fire, frost, flood, drought disease, casualty, errors in count, spoilage or other circumstances beyond our control.

Important Contact Information

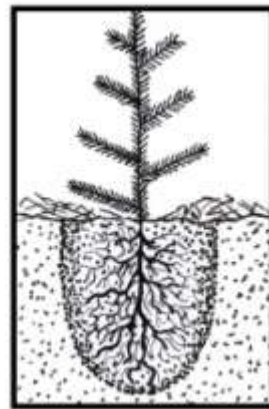
**Contact persons: Sara, Anna
Kittitas County Conservation
District
(509) 925-8585 Ext. 4
Fax (509) 925-8591**

WSU Cooperative Extension
(509) 962-7507

Noxious Weed Control Board
(509) 962-7007

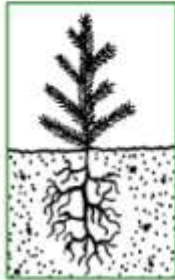
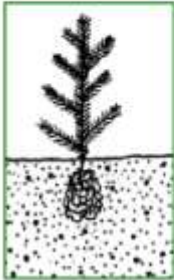
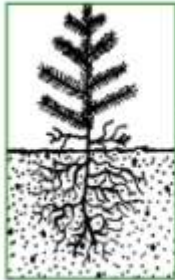
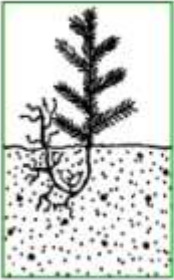
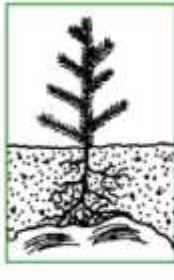
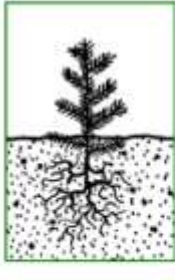
HOW TO PLANT

- Store plants in refrigerated location until ready to plant.
- Allow ventilation around stored packages.
- Protect seedling from freezing temperatures.
- Mend any tears to seedling bags with tape.
- Protect seedling from wind and sun before and during planting.
- Plant seedlings within 5 days of receiving them.



1. Dig large enough hole for roots to dangle making sure roots are not bent, twisted or bundled.
2. Slowly fill around roots with loose soil avoiding large soil clumps, rocks and air pockets.
3. Very lightly compact soil around tree checking to see that you haven't made any "planting mistakes."
4. Water deeply if possible to settle soil and moisture.
5. Mulching helps reduce weeds and water loss.
6. Tree protectors help with wildlife browse.

PLANTING MISTAKES

	AIR POCKET <ul style="list-style-type: none"> • Dries out • Creates extreme moisture stress • Less anchor 		ROOT BOUND <ul style="list-style-type: none"> • Decrease in proper rooting • Limited moisture & nutrient uptake
	TOO SHALLOW <ul style="list-style-type: none"> • Dries out • Susceptible to frost heave • Less anchor 		"J" ROOT <ul style="list-style-type: none"> • Dries out • Reduced moisture and nutrient uptake • Less anchor
	ON ROCK <ul style="list-style-type: none"> • Decrease in proper rooting • Limited moisture & nutrient uptake 		TOO DEEP <ul style="list-style-type: none"> • Suffocates plant • Prone to collar rot

For more information about each species-ask for the detailed descriptions provided by the WSU Master Gardeners at 962-7507



All plant materials are bare root stock, unless otherwise noted.

CLE ELUM
ELLENSBURG

Plant Zone (USDA)	4	5
Growing Season	90-120 days	120 days
First & Last Frost	First: Sept. 11 Last: May 24	First: Sept. 25 Last: May 1
Elevation	1,930 feet	1,520 feet
Average Annual Precipitation	22 inches	9 inches

